

KALISPELL
MONTANA LOG HOMES



The Handcrafted Alternative



The Montana Log Homes

Handcrafted Log Package

Montana Log Homes are log homes with a difference, a handcrafted difference. Unlike milled or “kit” homes, our log shells are individually crafted by skilled log smiths using chainsaws and traditional hand tools. Each full length log is cut, carved and then assembled together into the finished structure right here at our construction yard in Kalispell. By hand fitting each log separately, we maintain a high degree of quality control throughout the entire log construction process.

Montana Log Homes also offers design and blueprint services to enable you to achieve the custom details that you want built into your home. From the planning stage to final reconstruction on your site, the experienced team at Montana Log Homes will give your project the attention you expect.

Welcome to Kalispell Montana Log Homes

I know that with all the log builders out there, deciding who will build your home is a daunting task. Let me tell you what separates Montana Log Homes from the pack and hopefully it will make your decision a little easier.

“Good enough” has too often been used as an excuse to let inferior work get by. At Montana Log Homes, “good enough” is not good enough; it has to be right. I have been building log homes since 1976, my partner joined me in 1981, and two of our crew bosses joined us in 1984 and 1985. This experience coupled with a commitment to quality, means your home will be built to standards unsurpassed in the industry. We take great pride in exceeding our customer’s expectations.

Being a fairly small company (there are ± 20 of us) enables us to give each home the attention it deserves. Attention to detail, combined with our experience, means there will be no unwelcome surprises; we see the whole picture, what needs to be done prior to our log work, and what will come after. You and/or your contractor will be involved in making decisions to assure the transition between the various trades will be as smooth as possible. To hear general contractors marvel at how all the roof lines are square, plumb and true, confirms the quality that I expect in each and every home and puts a smile on my face.

The last aspect I would like to touch on is our versatility. We have built large commercial projects, elegant retreats, modest cabins and even a log dog house. Feel free to modify one of our floor plans or bring us a plan of your own. We welcome the challenge to take your ideas and turn them into reality.

We invite you to check out our product, talk to our past customers, talk to contractors familiar with our work, and then make your decision. Rest assured we will not only build a home you will be proud of, but in doing so, we will also build a relationship of respect, trust and friendship.

Sincerely,

James P. Bachofner, PRESIDENT

Montana Log Homes will construct, deliver and re-assemble on your home site...

Log Walls – Hand peeled, full length, dry seasoned logs, ranging in size from 12”-30”, in lodge pole pine, engelmann spruce or western red cedar, assembled using Scandinavian full-scribe construction with saddle notched corners or chink style construction in full round logs or milled two sides with dovetail corner notches. Log walls are reinforced with 5/8” x 24” steel pins. Lagging or thru bolting is included where required by engineering. Pre-drilling of vertical electric chases within the log wall is included.

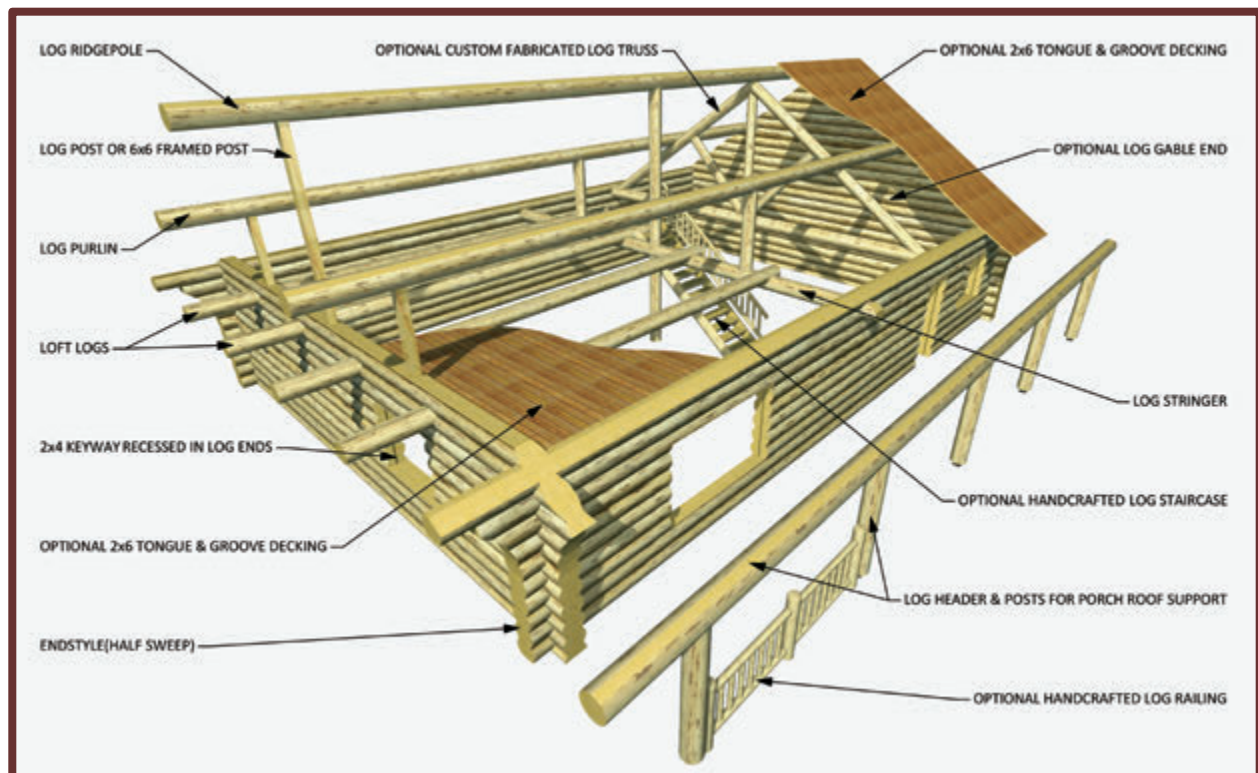
Log Floor Joists – Log joists are standard for the second floor or loft. Loft logs are saddle notched through the exterior log walls. They are milled flat on the top and a slot is cut in the perimeter log walls for smooth decking installation by your contractor.

Log Ridgepole & Purlins – Purlins are set on log posts or laminated 6”x6” uprights. Purlins extend past the gable ends a minimum of 3’ to form a protective eave when the finished roof is installed. Purlins are milled flat on the pitched edge for smooth decking installation by your contractor.

Log Posts & Headers – Porch and balcony roof supports with saddle notched posts and log headers are milled flat on the top edge for decking.

Re-Assembly – Two men from Montana Log Homes will travel to your home site and re-set the entire log shell with the help of three local men provided by the homeowner. The average log shell will take two days to re-set and another 2 or 3 days to do the on-site chainsaw work. Our crew will cut and keyway all the door and window openings in the log walls and will also slot the log walls where frame walls, connect to log walls.

Options – log trusses – full log gable ends – log railings – larger log diameters – log dormers – log staircases – T&G decking – log archways – log supports – valley logs – hammer beam trusses



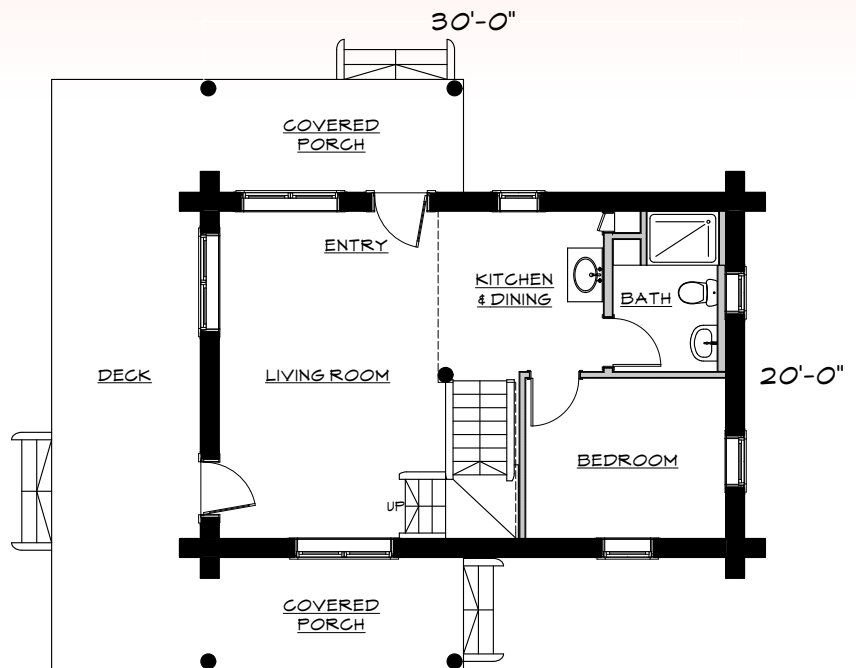
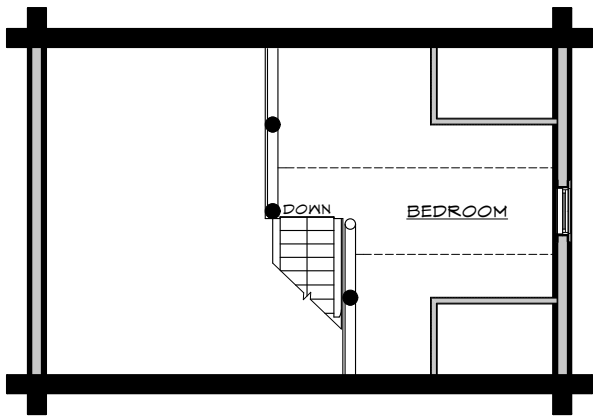


MLH 006

Main Level 600, Loft Level 73

"We think you are the very best in the industry! We were treated with the same care, respect and attention on our little trapper cabin as if we were building a million dollar lodge!"

Diann & Bill Larson, MLH home owners



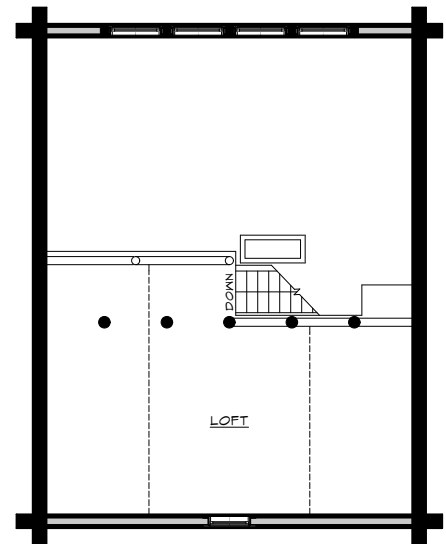
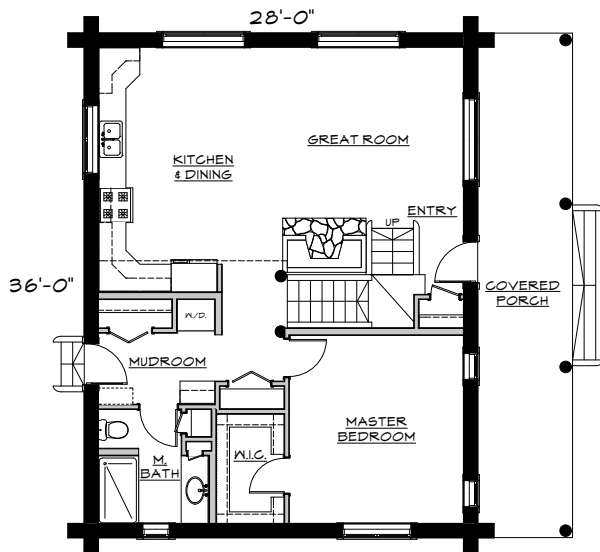


MLH 007-A

Main Level 1008, Loft Level 204

"We got lucky when we chose MLH. Your willingness to work with us as we secured financing meant so much. When we began the design process, Eric was so helpful and really listened to us. We ended up with the exact home we wanted. Once our home was finished MLH continued, and still is involved. Whether it's answering questions, troubleshooting, or even adjustments, Brad has been there every step of the way. You can't put a price on that. If we can help you get out the word about MLH awesomeness, just ask."

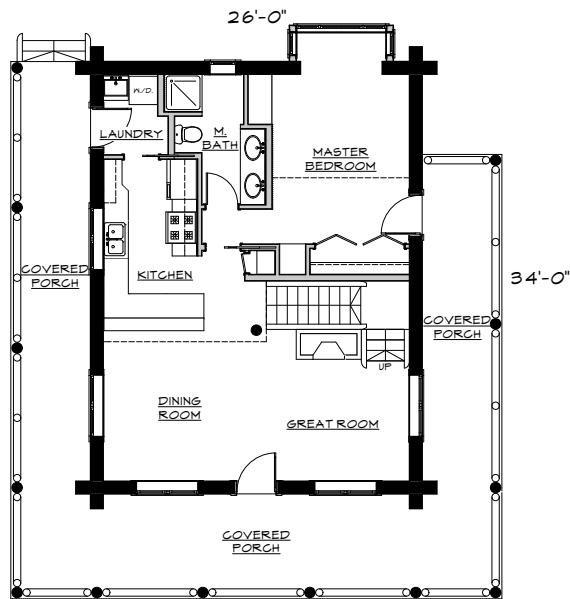
Scott & Joni Foster, MLH 007-A home owners



Montana Log Home's custom design services begin with your ideas and sketches which are then transformed into a set of preliminary plans in 3-D. The ArchiCad program we use enables our draftsmen to set up a Skype session with you and walk you through your home prior to finalizing your plans. This also applies to modified versions of our stock plans. Examples are shown below.

MLH 009-A

Main Level 908, Loft Level 290



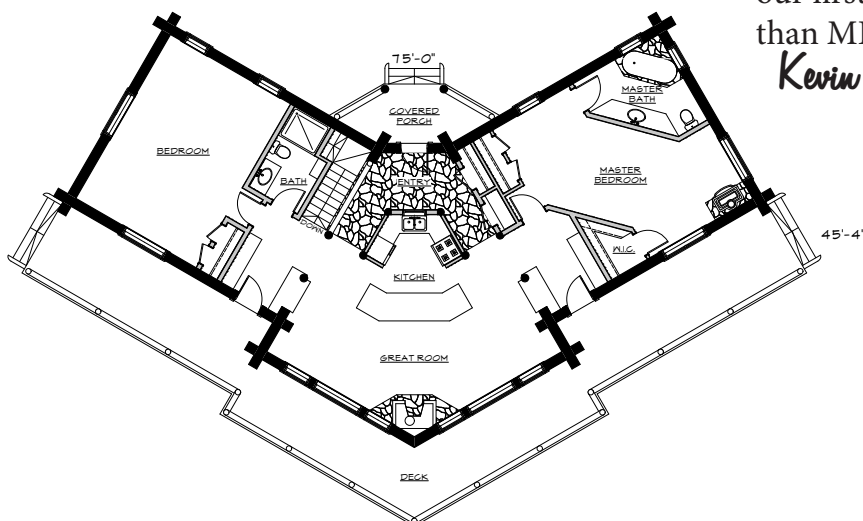
"Sincerely, from start to finish I can say that the entire process of selecting, designing and construction of the log package with Montana Log Homes was a pleasure. Everyone was focused on our requests and even when things couldn't be accommodated in the design, options were offered. As you know I was part of the crew during the re-set and it was spectacular in this day and time to work with individuals that worked as hard as yours did, and that cared about the end product. Well done!"

Ken Maynard, MLH 009-A home owner



MLH 014-A

Main Level 1784



"Montana Log Homes' quality is unparalleled! When we first started investigating log homes we had no idea of the wide variety of construction types. After submitting a deposit, we got buyer's remorse and re-investigated the options. Fortunately we found that our first instincts were correct. Nobody does it better than MLH. Glad we stuck to our guns."

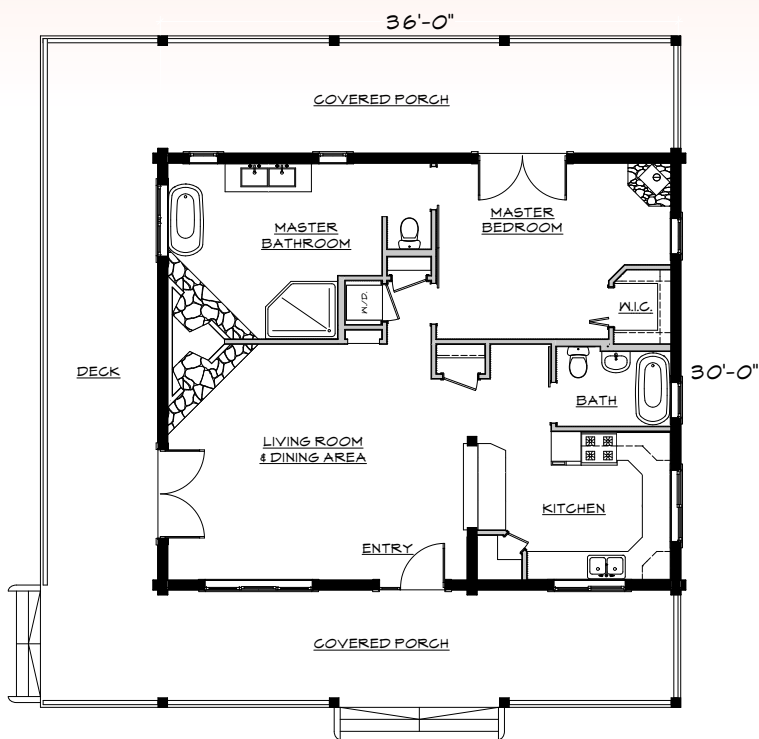
Kevin and Laura Sankey, MLH 014 home owners



MLH 015

Main Level 1080

This custom designed and furnished log home is a wonderful example of dovetail construction. Custom milled on two sides with dovetail corners – see page 66 for more information on this style of construction.

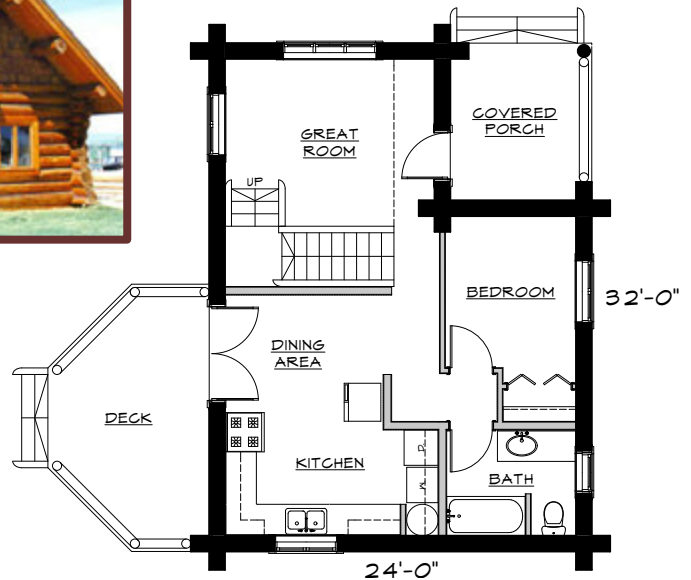
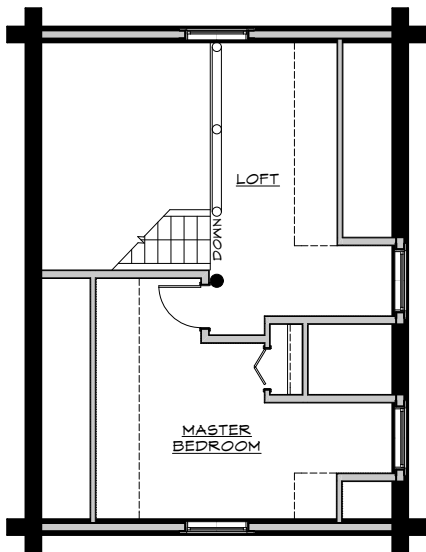


MLH 017

Main Level 678, Loft Level 303

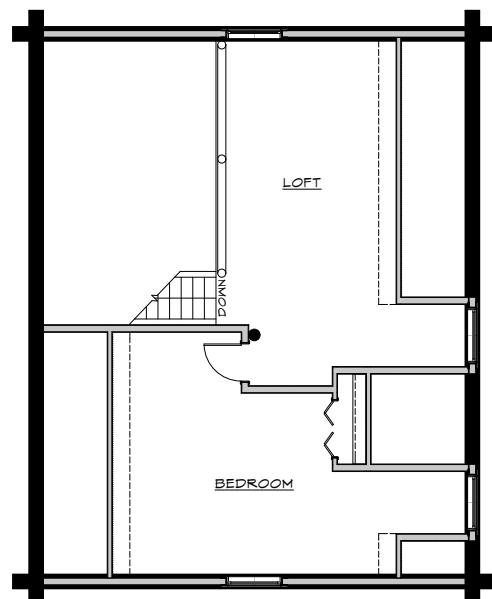
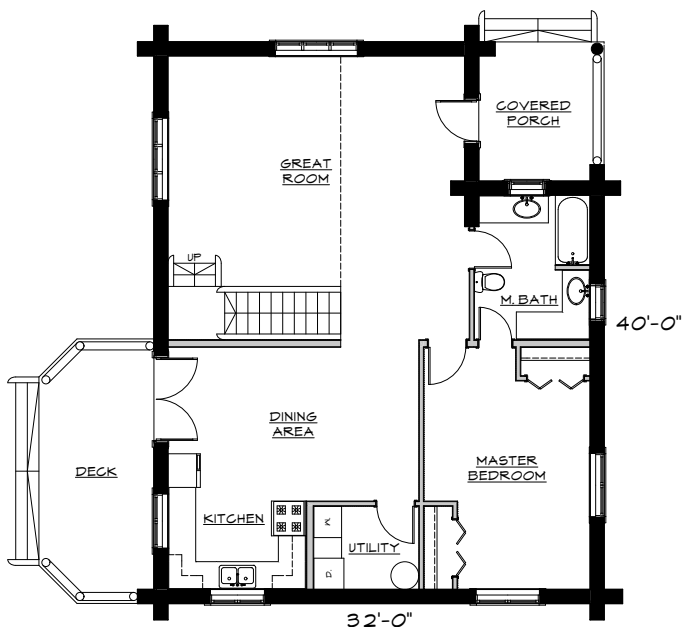
"To all of you at Montana Log Homes. Thank you! You made our experience a memory of a life time. You all deserve an award for excellence! We are so proud to own a Montana Log Home. It is truly a fine masterpiece, a work of art. We marvel at the craftsmanship. Your care and talents to handcraft are superior, especially now, as we really look around at other homes. To the personal attention, the professional handling and the true feeling of trust you promote. Thank you, we could easily do this again!"

Gary and Gloria Blankenbaker, MLH 017 home owners



MLH 018

Main Level 1190, Loft Level 633



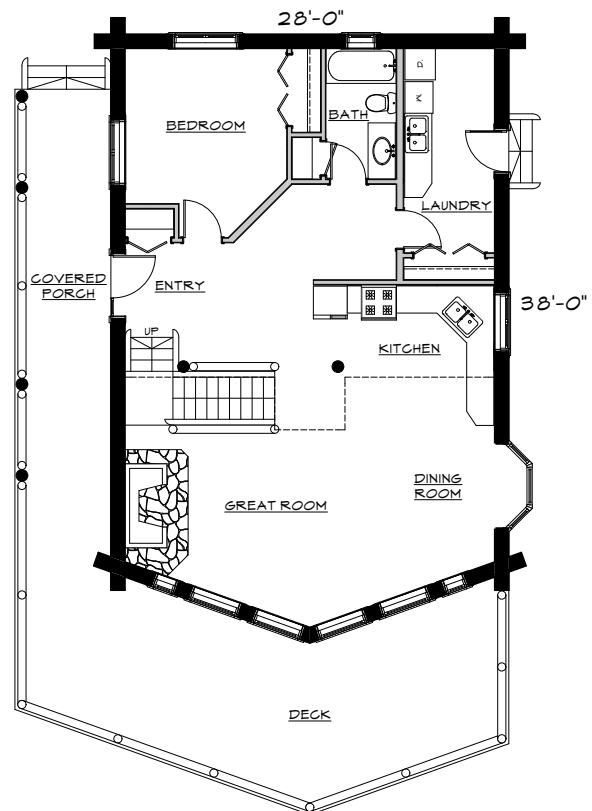
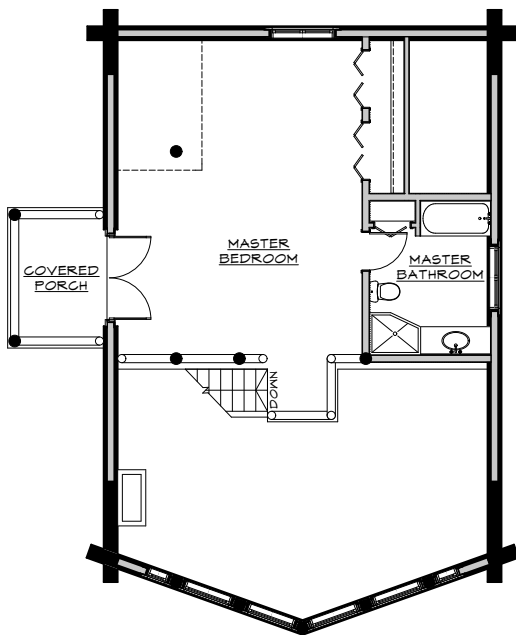
MLH 019

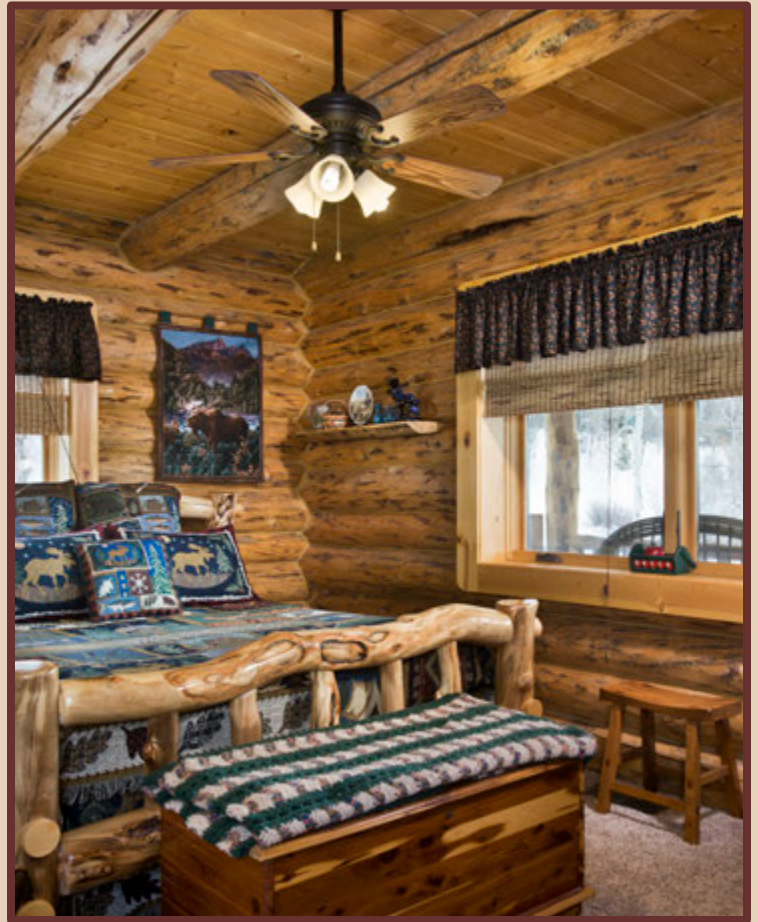
Main Level 1134, Loft Level 550

"We knew going into this project that having a house built remotely would be a challenge; we thought building a log home even more so. From the first meeting in your office, through and after the reset, you and your staff have been exceptionally patient with our many questions, offered advice and made the process as easy as possible. In the design stage, Eric is remarkable at taking a technical issue and explaining via telephone and/or web connection in a manner that we understood.

Lori and I were at the site during the reset process. Although you said it would be reset in three days, it was 'seeing is believing' last September. It is clear the crew from Montana Log Homes are craftsmen in every sense of the word..."

Grant & Lori Colby, home owners of a (modified) MLH 019 home

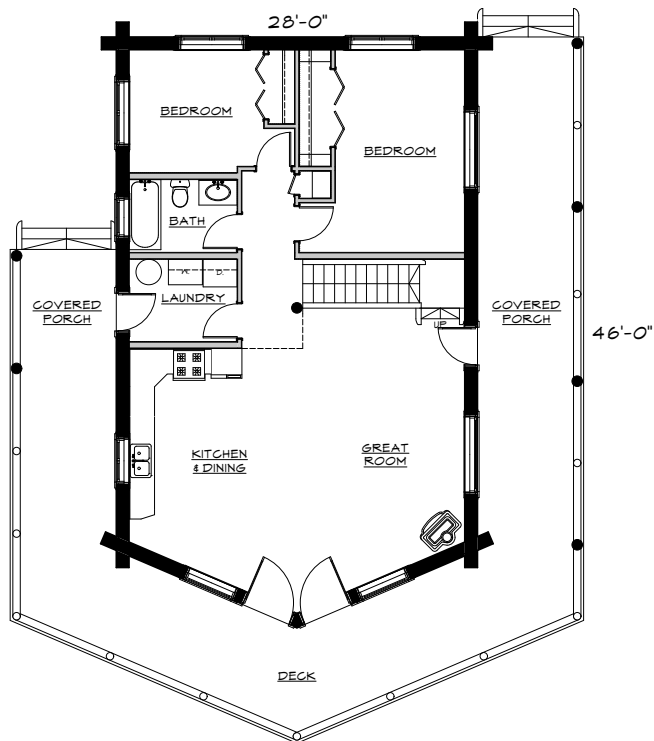
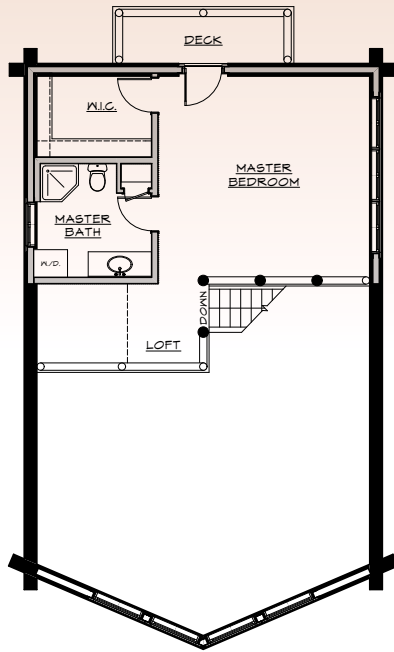




MLH 019-A

Main Level 1204

Loft Level 560



"We love your style and design, very good taste, very competitive prices. Was a very enjoyable experience, miss talking to you on a frequent basis. AWESOME people that do an AWESOME job, very experienced in cabins and have very good advice, would DEFINITELY recommend to anybody interested in a very high quality home. Can't say enough GOOD!! Thanks for all your help!"

Dale Bouma, MLH home owner

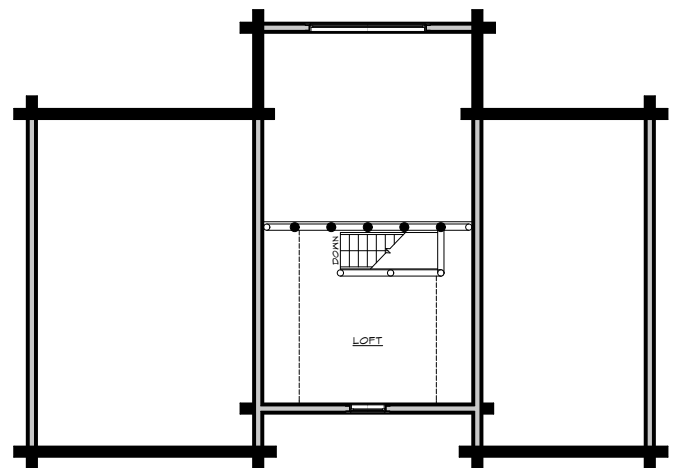
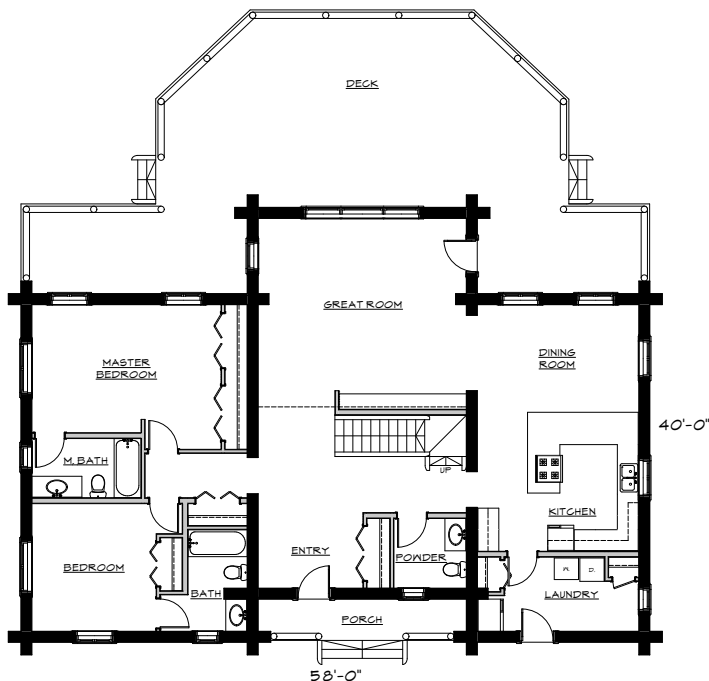




MLH 020

Main Level 1945, Loft Level 185

This three chamber design has been modified in so many ways we've lost count.
You will see some of the results in the pages to come.









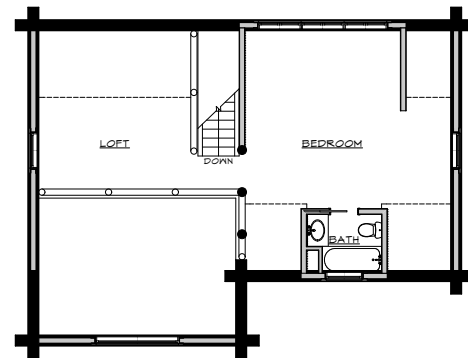
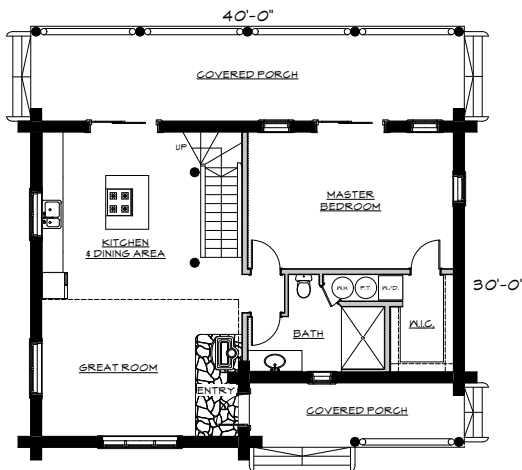
This model serves as our home office in Kalispell. Many floor plans work well within these walls.

MLH 021

Main Level 1080, Loft Level 528

"I can't express how pleased we are with our log home. We just got back from watching the reset. Everything was beyond what we expected. Our home is beautiful and amazing. Everyone was so nice. Tory and Justin were wonderful. They really enjoy their work and take a lot of pride in their craftsmanship. They did an excellent job of directing everyone else. We really enjoyed talking with Sam. This was a really fun experience. Dale said I walked around for four days with a goofy grin on my face. I'm still smiling."

Dale & Cecelia Thompson,
MLH 021 home owners

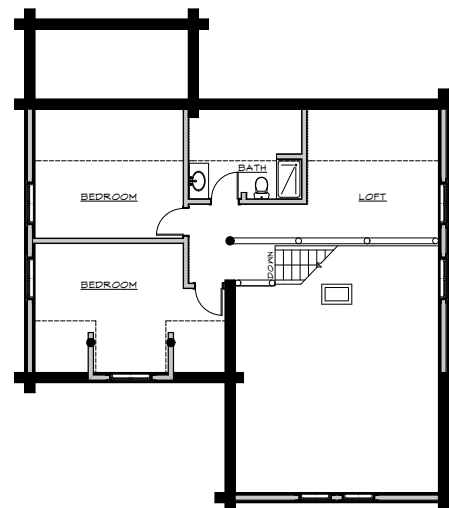
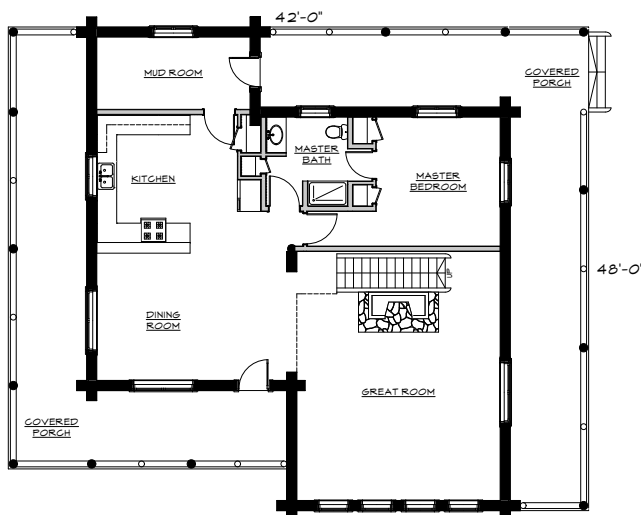


MLH 021-A

Main Level 1576, Loft Level 569

"...Every phase and detail of our log home construction with Montana Log Homes was above all our expectations! It pays to get the very best and Montana Log Homes is just that! The very best!! Thank you."

Craig & Sharon Hart, MLH 021-A home owners





“WOW” What else can be said?!
Nothing else will do! We just wanted you all to know we are so happy, excited and thrilled with our new Montana Log Home. The house is a dream come true for us . . . Nine years in the planning. Not only do we have the log home we always dreamed of building, but we have an incredible, handcrafted work of art – the home has surpassed our original intentions.”

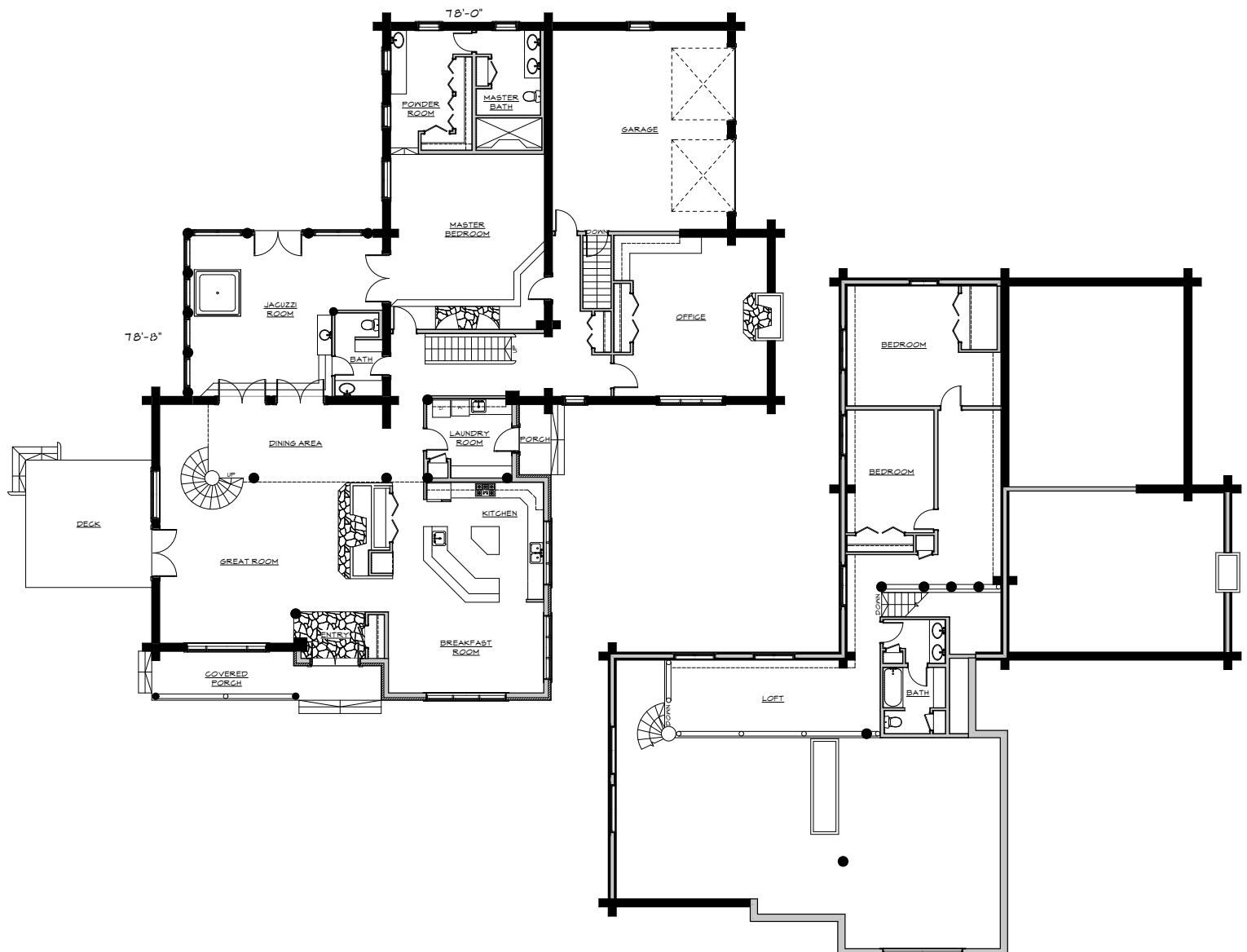
John & Linda Kauffman,

MLH 023 home owners

MLH 023

Main Level 3823, Loft Level 1072, Garage 598

A unique combination of log, stone and frame construction.









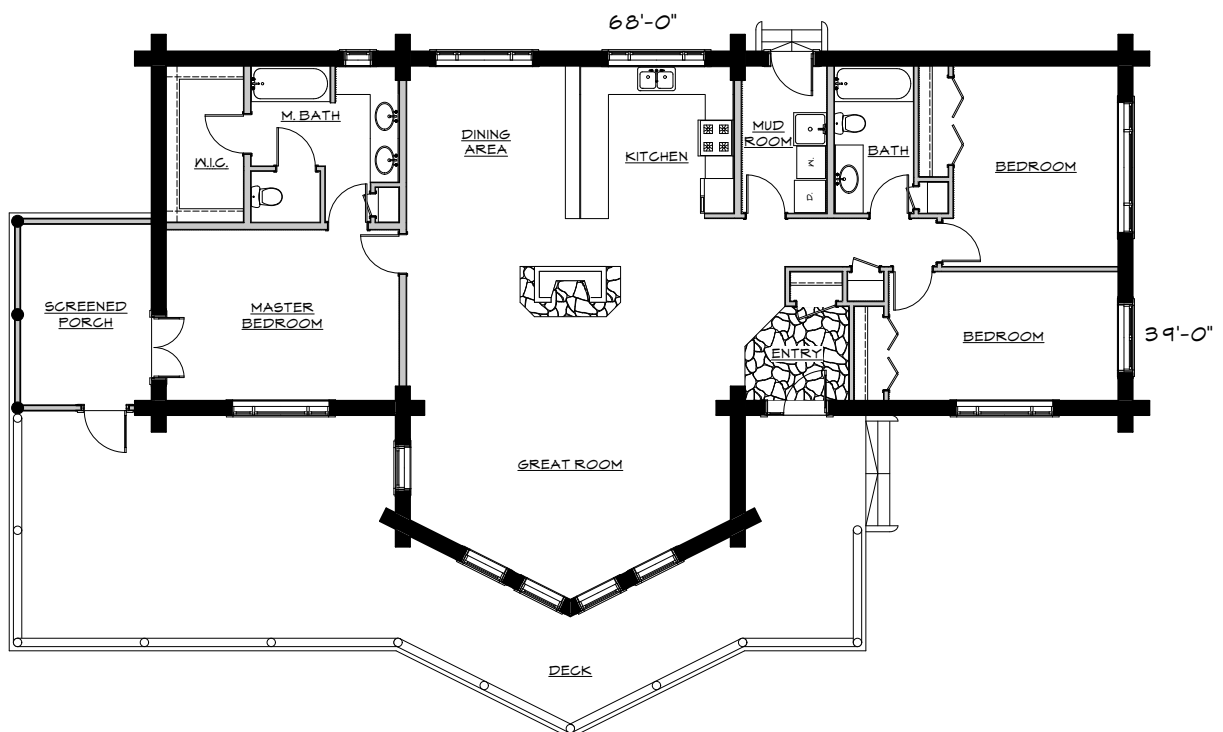
MLH 024

Main Level 1964

This ranch style log home has cathedral ceilings throughout with a massive log truss in the great room. A central fireplace to maximize heating is the focal point of the great room and dining/kitchen area. A private master bedroom wing also has access to a covered, screened porch. Two additional bedrooms in the opposite wing, round out this popular plan.

"I just want to commend you on the wonderful guys you have working for you. Odin Warriner & Tory Johnson put (reset) our home in Lamoille, Nevada. They are very polite, hard workers. They work together well and work with others well too. They were very helpful, dedicated to getting their jobs done and with perfection, I might add! My husband and I want you to know you have 2 extremely dedicated men working for you. We were all very impressed at the skill, hours and yet care they put in while they were here.."

Joseph & Kathy Aiello, MLH 024 home owners





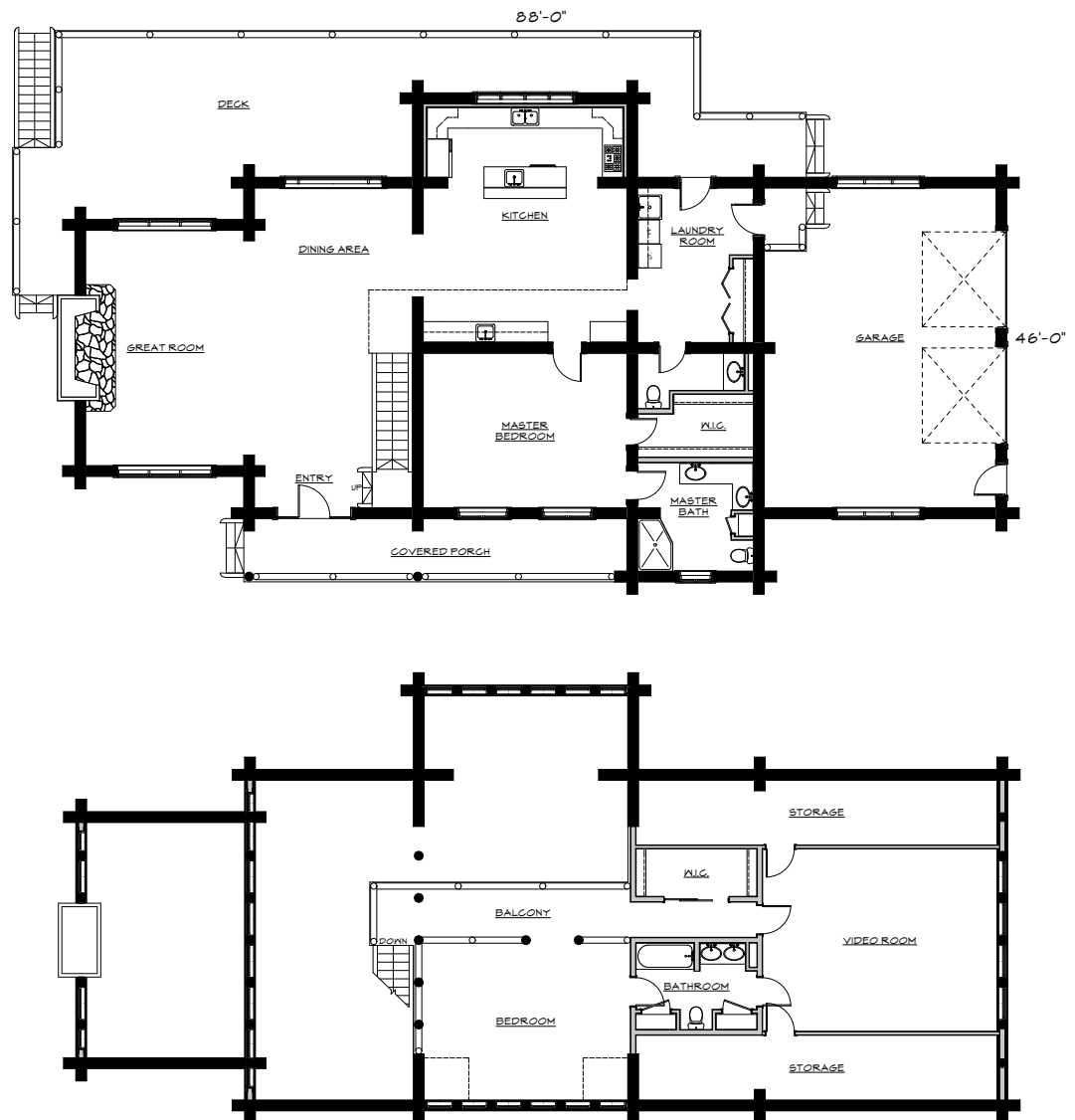
MLH 025

Main Level 2196, Loft Level 1062, Garage 736

A spectacular home with a spacious floor plan that is perfect for entertaining. Large great room, dining room and kitchen, all with vaulted ceilings. Transom-style windows accent the roof lines and give additional natural lighting. The loft has a delightful bedroom and a bonus room over the attached garage. This floor plan has an optional full basement plan for two additional bedrooms, wet bar, rec-room, billiard room and ample storage.

"...I have had the pleasure of working with Montana Log Homes on four projects over the past four years, and have attained a great deal of gratification from their professional approach and scrutiny to detail in all of these projects. The quality of materials and craftsmanship were never questioned. The quality of excellence enhanced by the stability of their operations and their commitment to excellence was displayed throughout their communication of pertinent information to all concerned. As a general contractor the reliability of such an organization is an asset to the profession and a quality sought by all. Rarely does one see such complete performance from a construction firm..."

Michael J Roessman,
President Snow Country
Construction, Inc.





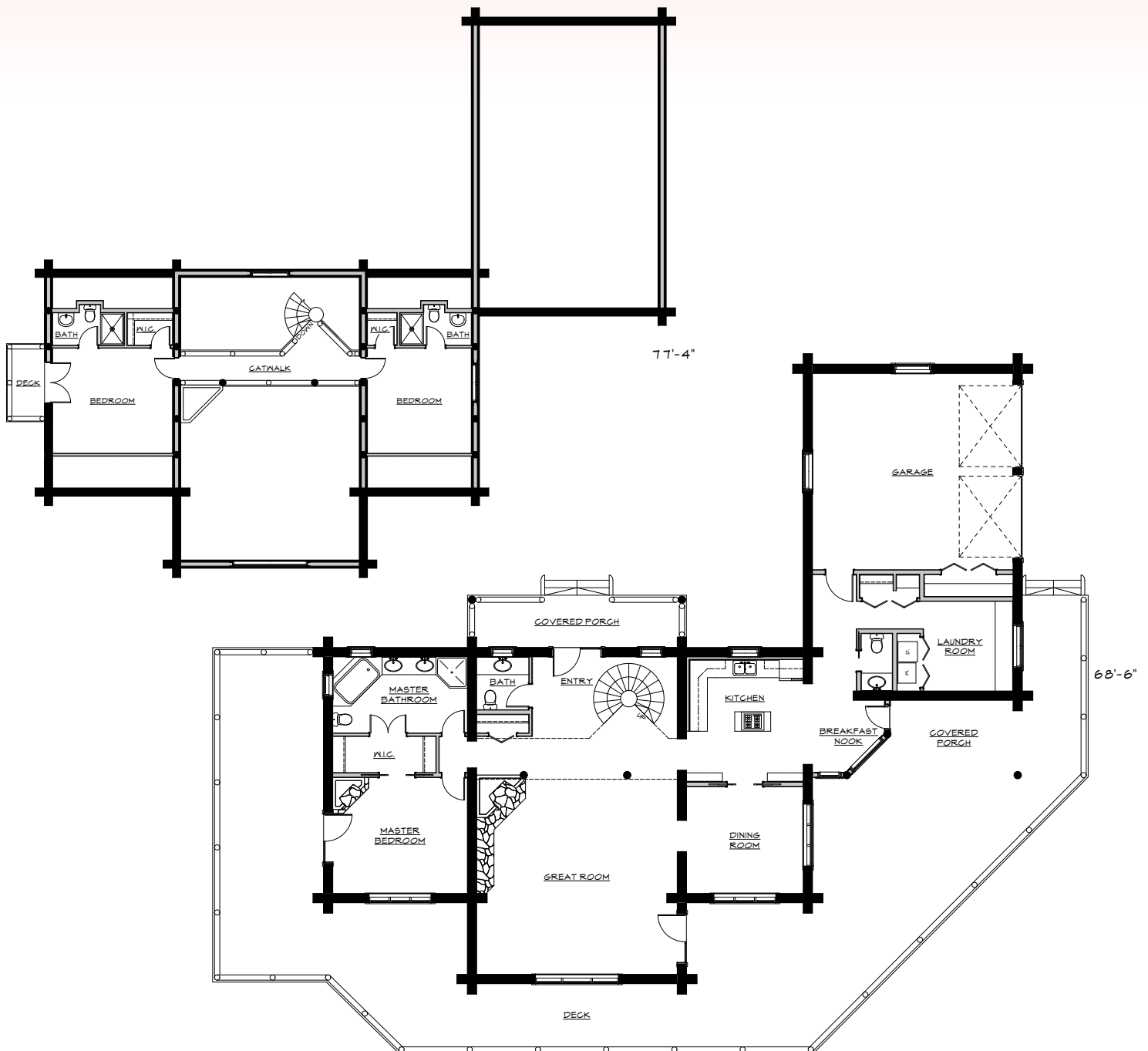




MLH 026

Main Level 2135, Loft Level 695, Garage 544

This home features a private main floor master bedroom suite and two additional bedrooms in the loft, each with their own private bath. Loft bedrooms are accessed by a spiral log staircase to a catwalk over looking the great room. Greet the day with breakfast in the sun room conveniently located off the kitchen. An attached two car garage also houses the laundry/mud room and a powder room for convenience.





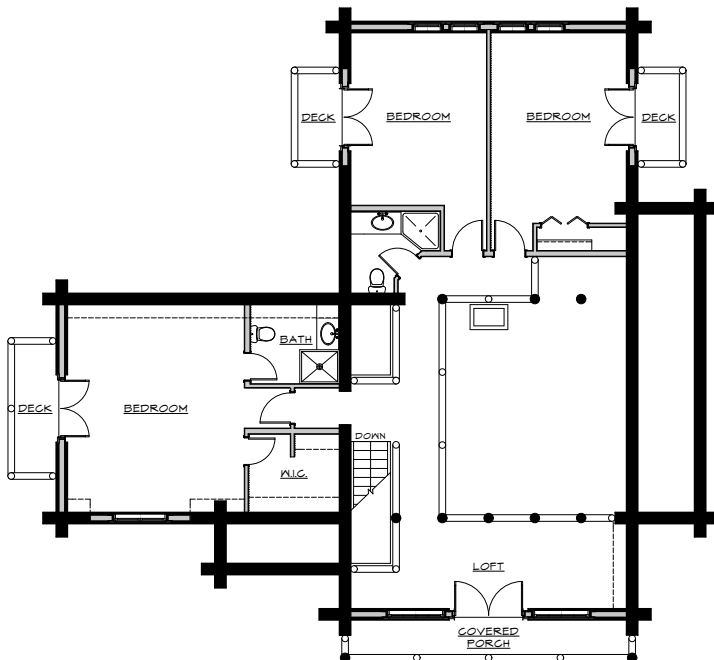
MLH 027

Main Level 1666

Loft Level 1318

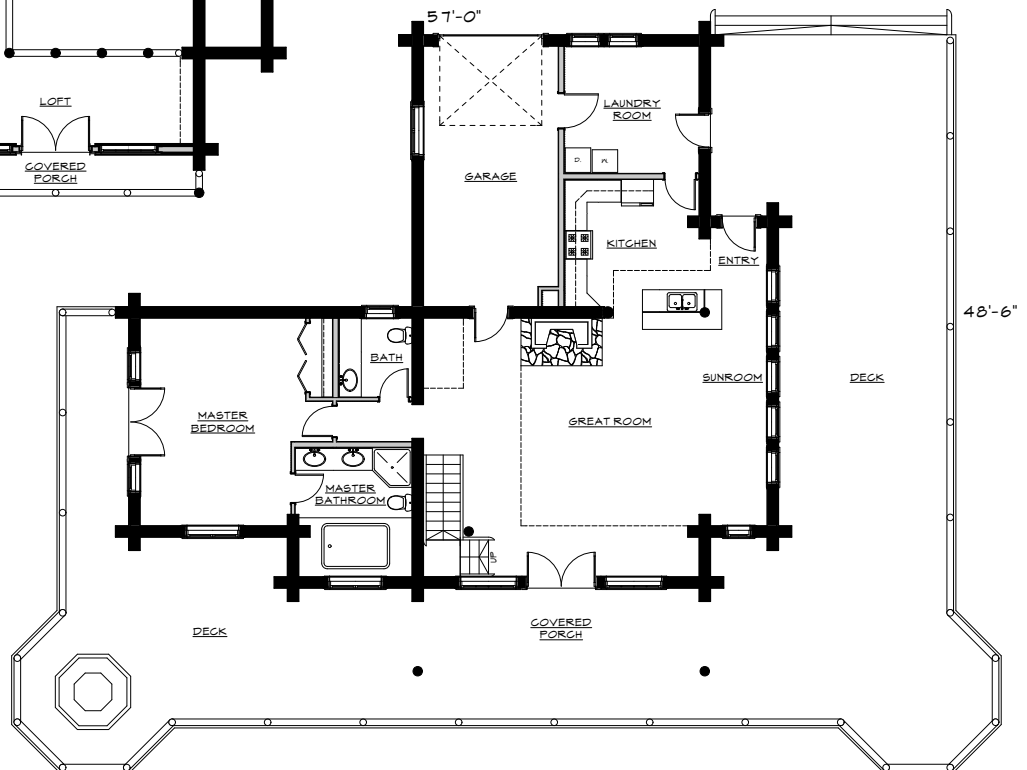
Garage 312

Large diameter logs, timber frame trusses and a gorgeous sun room are a few of the details that give this home such flair!



"Our log home design was a very complex project. Your crew in Montana orchestrated it's "first" construction flawlessly and the re-assembly was likewise. It is a work of art!"

David Knox, MLH 027 home owner





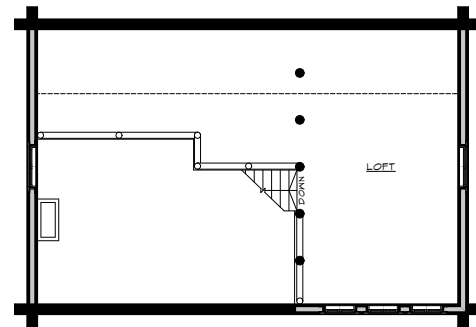
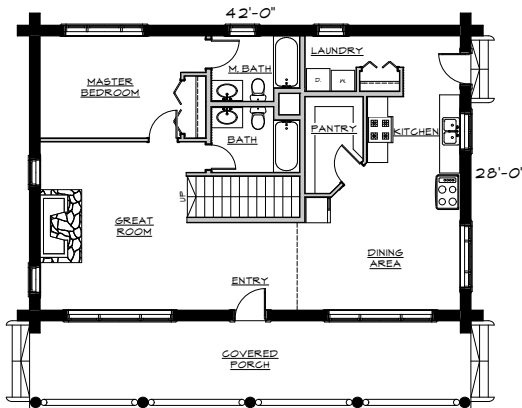


MLH 028

Main Level 1176

Loft Level 484

Frontier spirit and rustic charm in a vacation home or permanent residence. A covered front porch adds character and style.

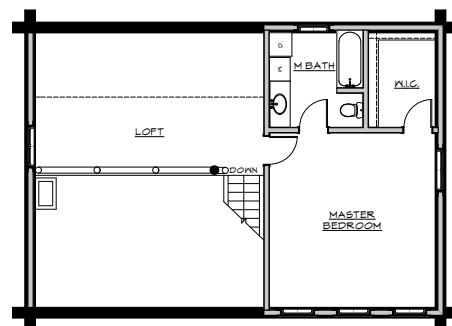
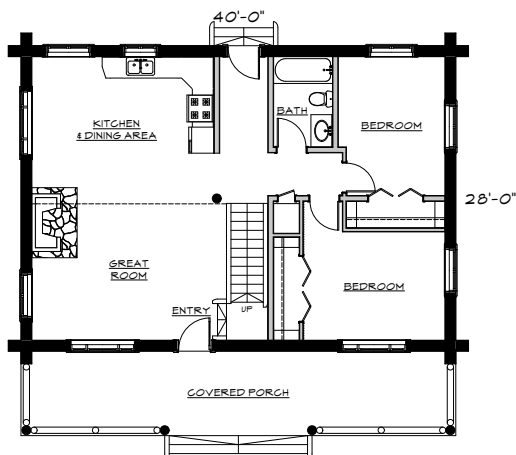


MLH 028-A

Main Level 1120, Loft Level 650

“...I could not be happier with my Montana Log Home. I’m living in it year round at 8600 feet elevation some eight miles to the nearest road; the snow is high and the winds are brisk, but I’m cozy and warm and fully secure in my Montana Log Home...”

Mary Bailey, MLH 028-A (modified) home owner



MLH 032

Main Level 1774, Loft Level 302



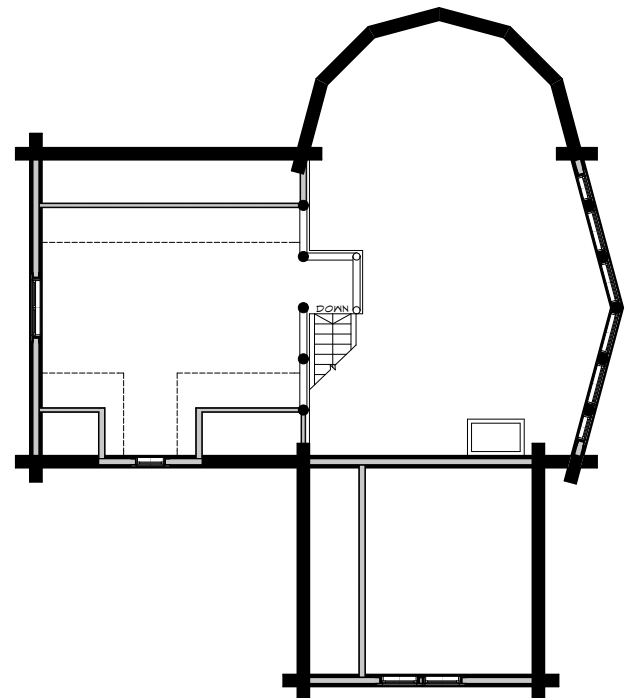
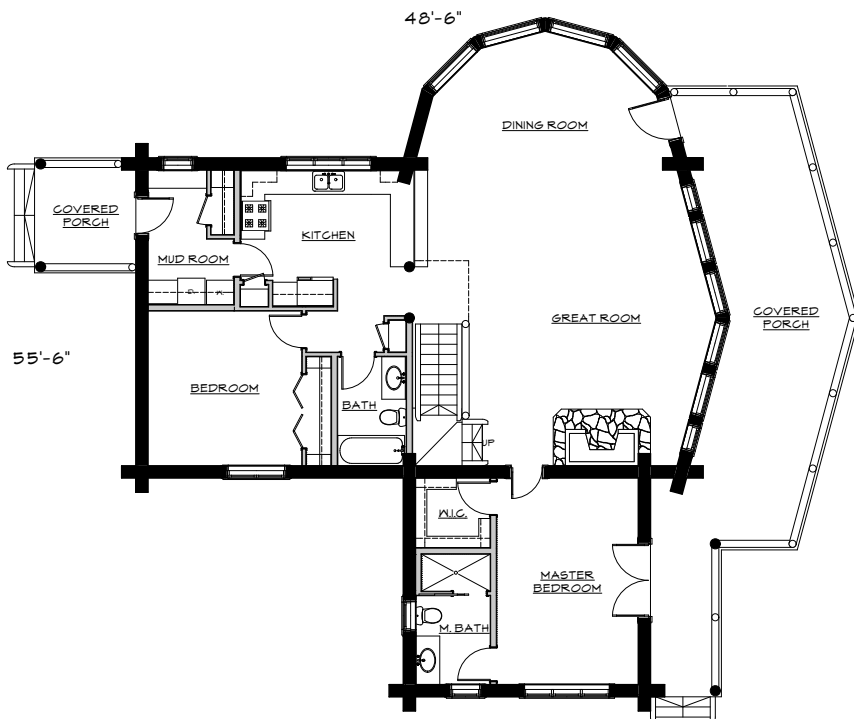
“... I would like to thank you and your group for the successful completion of my excellent log home. My cabin was a complete custom log cabin set in a beautiful but exceptionally remote location in the mountains of Montana. The project was delivered exactly on-time and on-budget as promised. There were no surprises, no cost over-runs and no time slippages. The contract was simple and faithfully executed.

Montana Log Homes worked diligently with my general contractor to take the initial design (a complete custom build/version one design) and meld it into the

local mountain setting to create a spectacular log cabin. Although new the cabin now has the feel of belonging to the local environs. The local bears do not even give it a second sniff.

The entire cabin was constructed in 9 months exactly as planned. Due to work commitments, I was absent during the entire construction process; I was thankful that I had selected the honest, hard working folks of Montana Log Homes to handle my affairs. I am 100% satisfied with the result. I would recommend Montana Log Homes of Kalispell to anyone wishing to build a quality log cabin.”

Bill & Luann McElduff, MLH 032 home owners









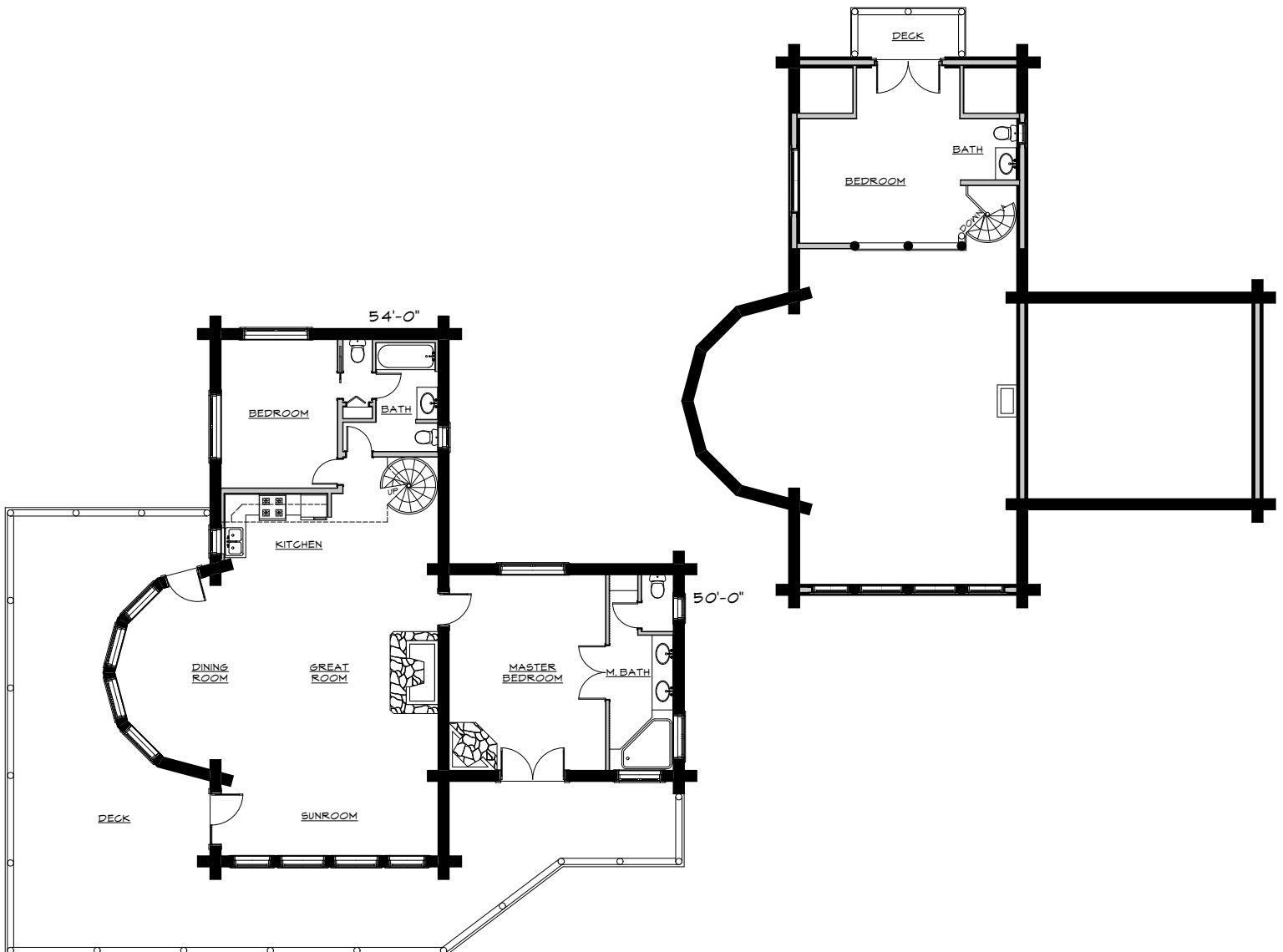
MLH 033

Main Level 1690, Loft Level 289

Large windows and an open floor plan let light flood the home and provide breathtaking views of the surrounding scenery and wildlife. Character logs in the dining bay accent this unique layout.

“...The house is tight and the craftsmanship is excellent. The logs are beautiful, with hand peeling to provide for lots of character.”

Ernie & Joan Soper,
MLH 033 home owners





MLH 034

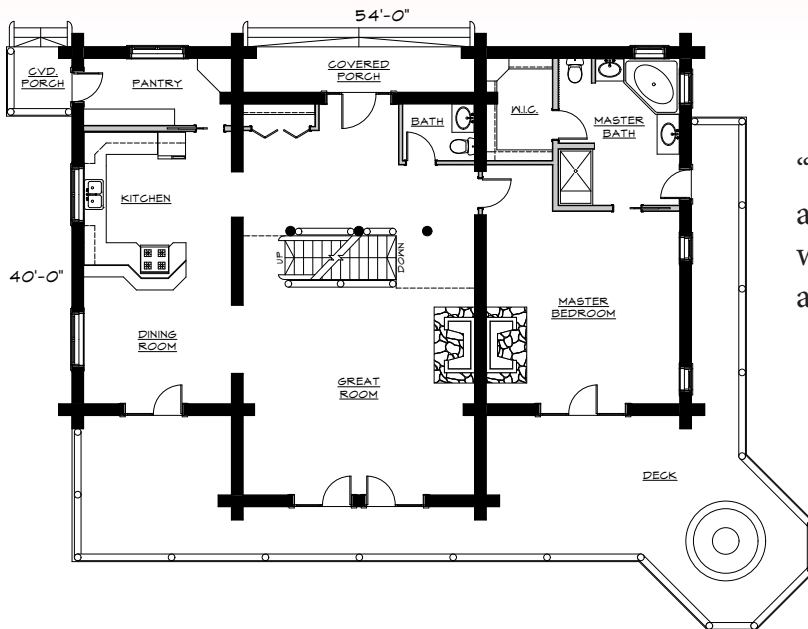
Main Level 1821

Loft Level 174

Lower Level 1176

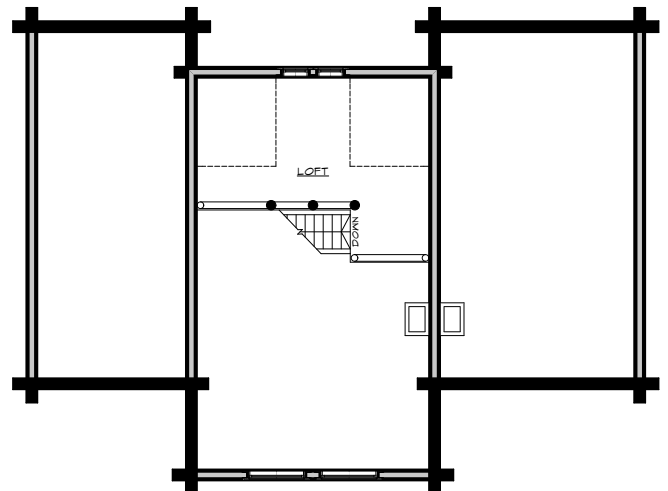
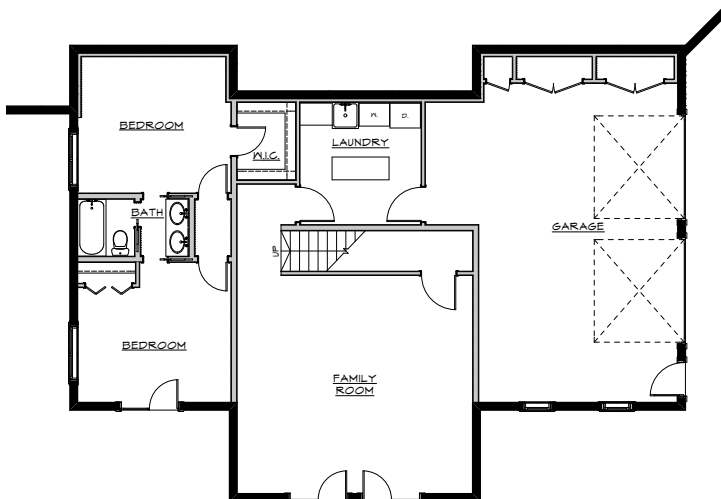
Garage 645

A winner of Log Home Living Magazine's Top 10 Floor plans 2001 contest, this three bedroom, two-and-a-half bath design offers a central great room, a private first floor master bedroom wing and a kitchen-dining-pantry wing. The loft is a retreat, a home office, hobby room, library or guest room. Two additional bedrooms, a bath, family room and two car garage make up the basement plan. A very functional, smartly executed design.



"We chose MLH due to the beauty, uniqueness and the quality of the workmanship in the homes we looked at. We have nothing but good to say about our experience in building our log home."

Jim & Vicki Holmes, MLH 034 home owners









See page 54 for the floor plan of this home.



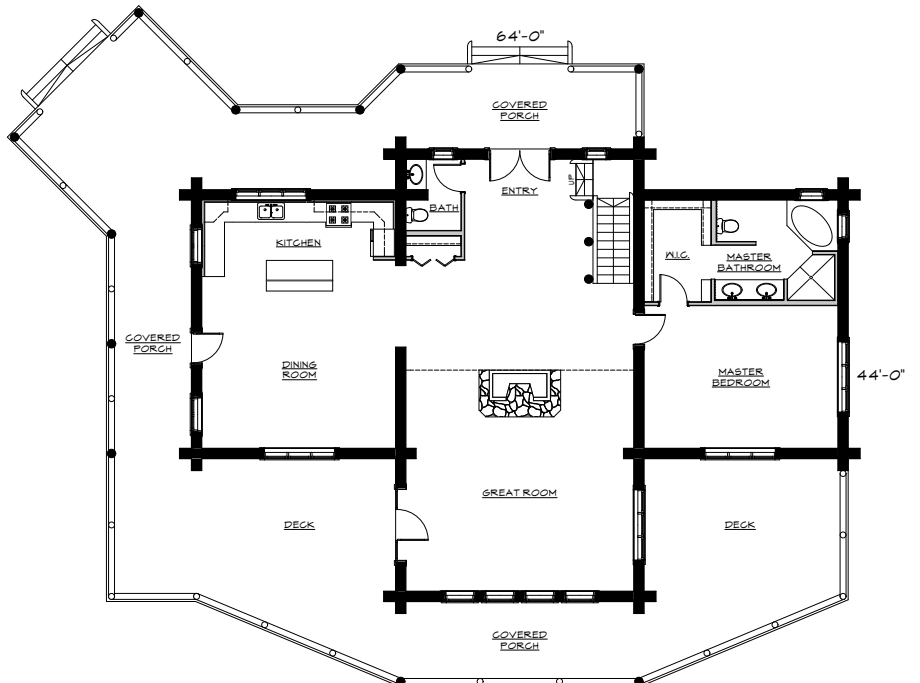
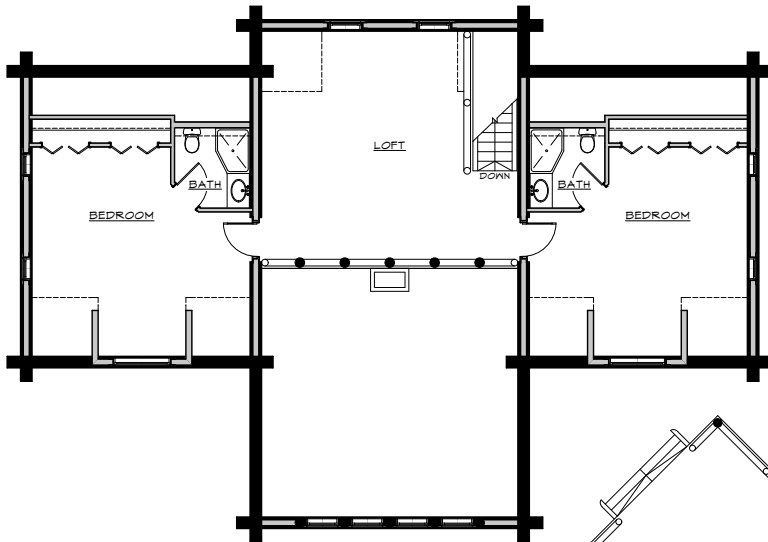


MLH 035

Main Level 2069, Loft Level 1066

"We are very pleased with the customer service we received from our first phone call to Montana Log Homes to our last. Brad – you are amazing! I just can't imagine purchasing something as unique (and foreign to us) as a log home – without your 'holding our hands' – the entire way...the product, process and customer service was superb. Thanks again for everything you did for us...Sincerely",

Annette Fryman "Thanks for everything!"
Doug Fryman, MLH home owner





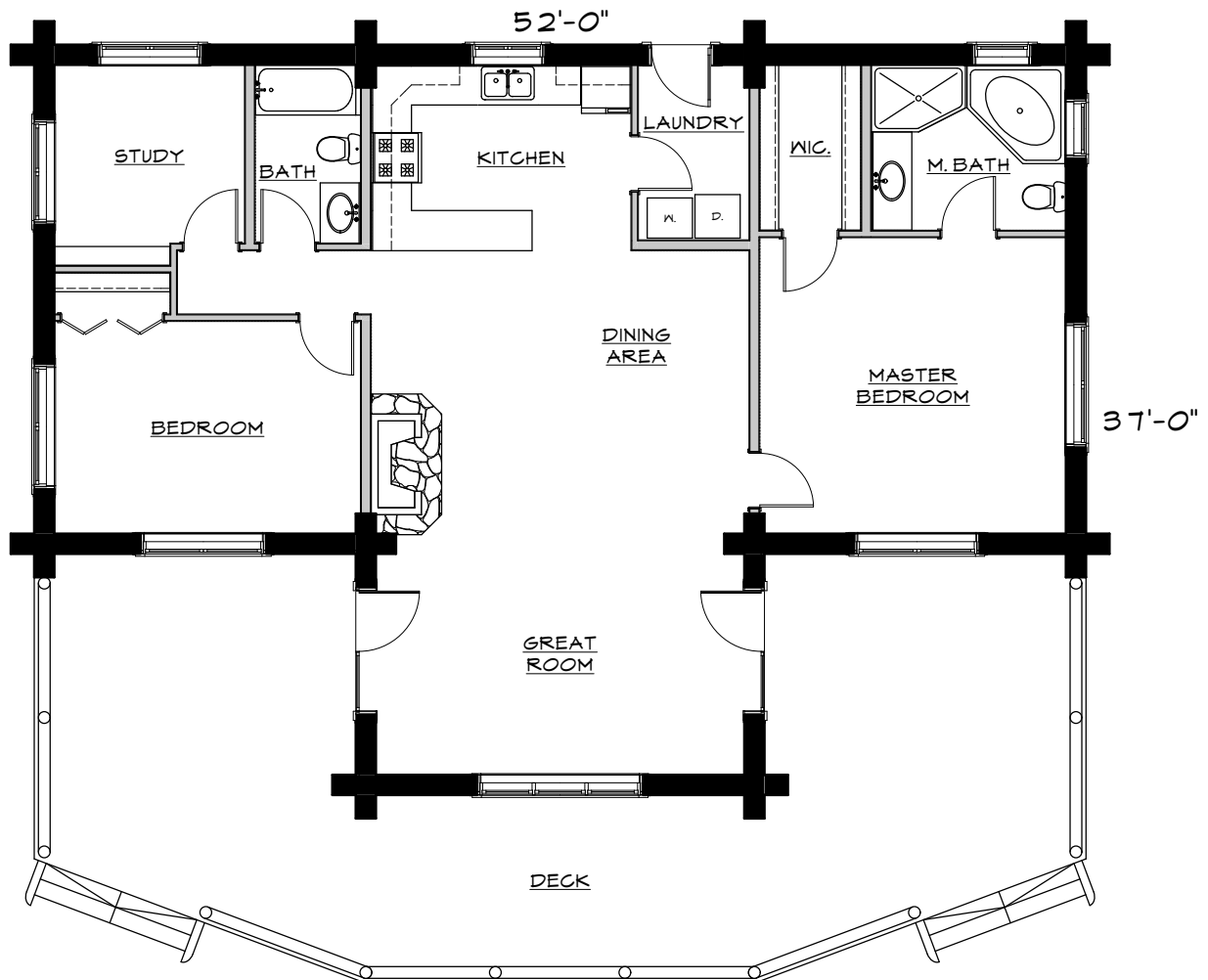
MLH 036

Main Level 1540

The Elk River plan is a customized, hand-crafted, three bedroom, two bathroom ranch style with vaulted ceilings and a miniature loft for the home office, hobby room or what have you. This is a practical and efficient floor plan.

"Instead of large square footage, we chose to build a quality log home with quality fittings. It was everything we dreamed of."

Phil & Debbi Street, MLH 036 home owners







MLH 037

Main Level 2162

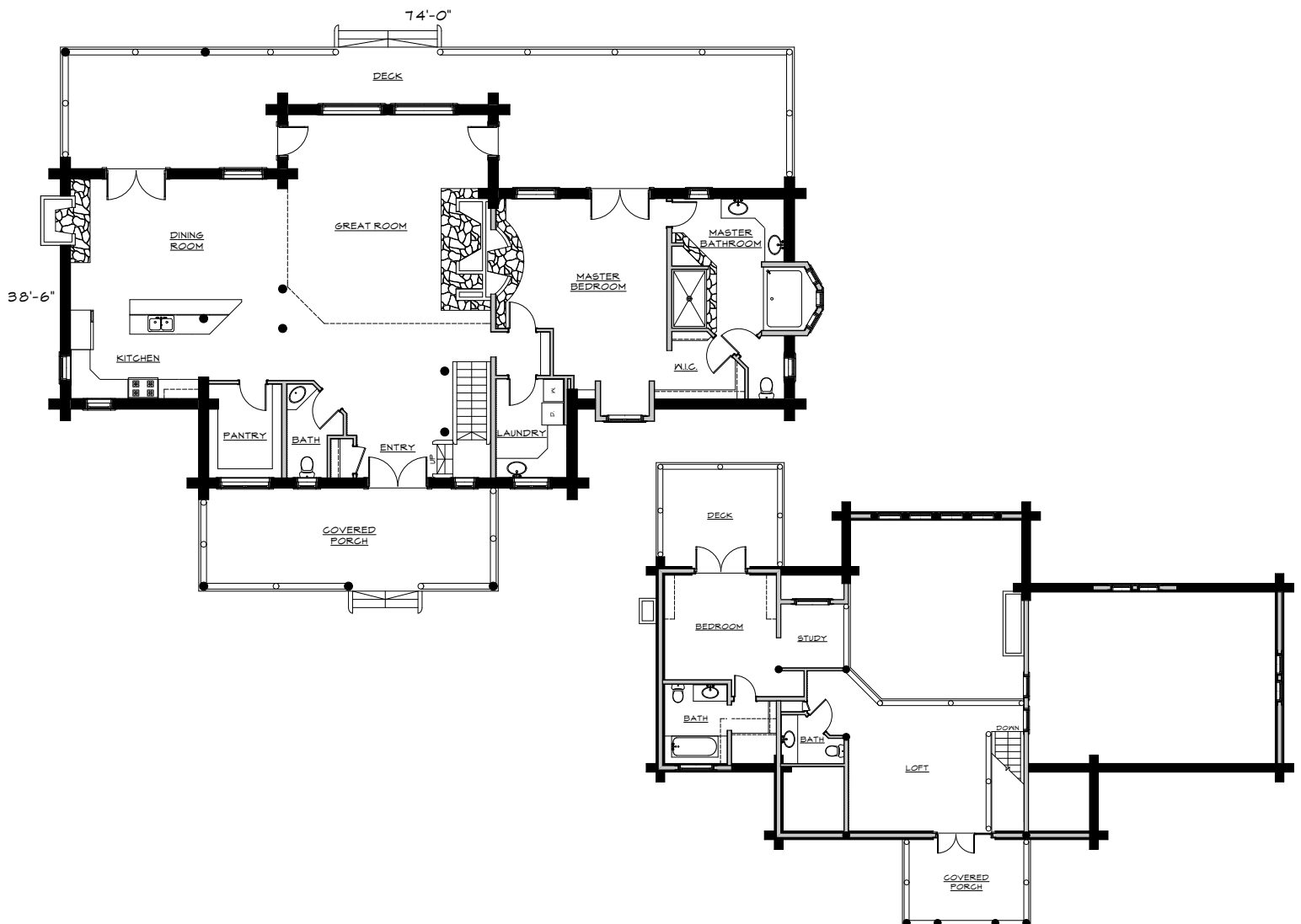
Loft Level 754

A winner of Log Home Design Ideas Sharing the Dream contest, this lodge-style floor plan puts the open plan concept to creative use. Designed with efficiency in mind, public spaces have well thought out traffic flow while the kitchen island provides delineation of space and function. A private master suite is conveniently located on the main floor. A covered balcony from the loft library is a wonderful feature.



"Words cannot express how delighted we are with our new log home. I hate to brag but it is gorgeous, beautiful, stupendous, awesome, magnificent, etc., etc. Ten times greater than I ever envisioned it would be. Sometimes I just sit and stare."

Jim & Ann Houx, MLH 037 home owners

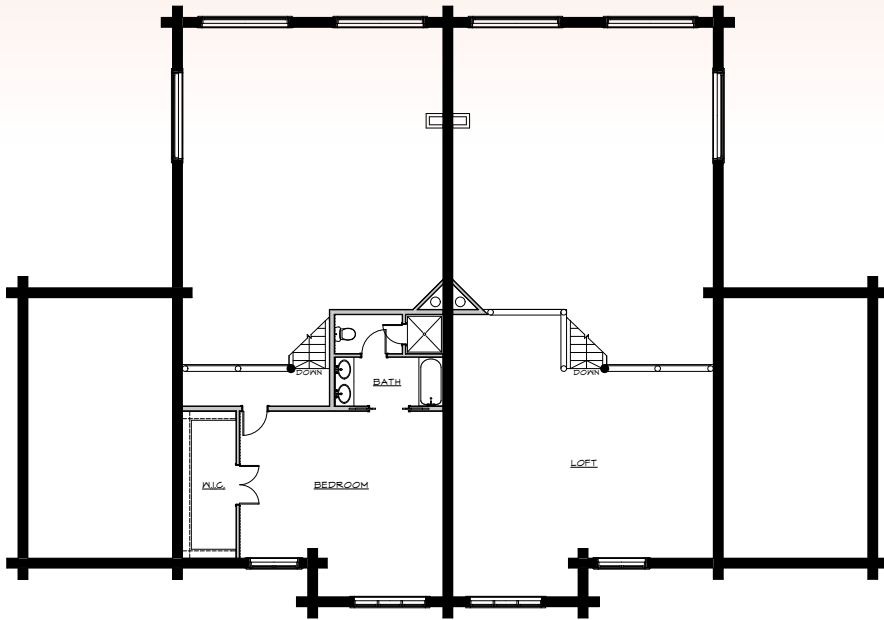




MLH 038

Main Level 4243, Loft Level 1418

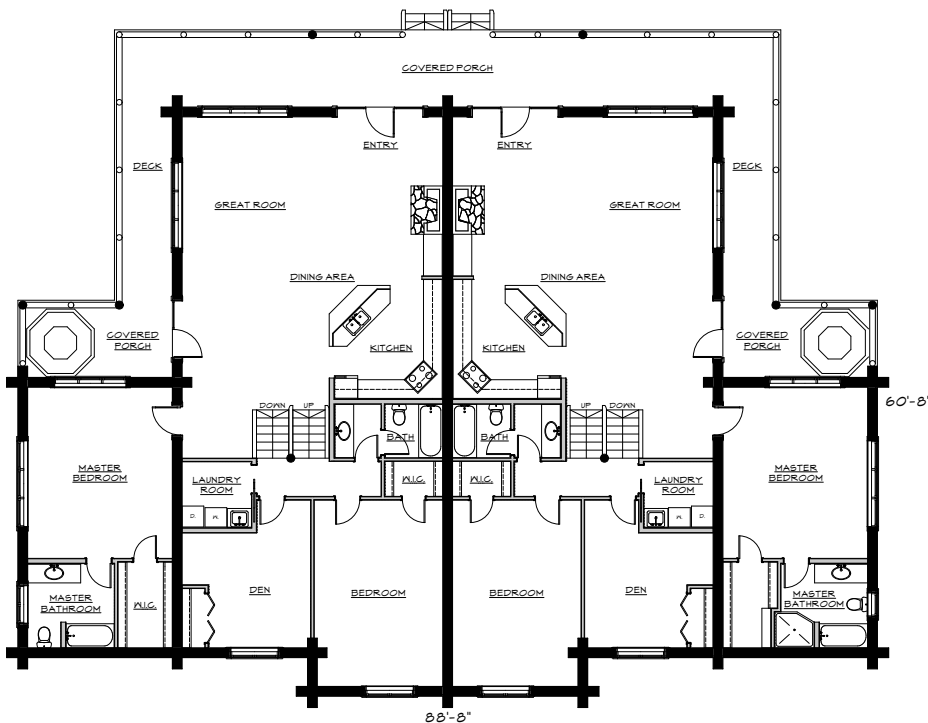
This custom home is a unique multilevel duplex design. Full log gable ends, 60-foot log trusses, custom log staircases and hand railing are some of the very special features of this home totaling over 7000 square feet of living space.



"We are very pleased with our Montana Log Home... When we decided on log construction, we didn't realize the specialized and unique nature of the job... Montana Log Homes is truly a great company and we were very fortunate to have had them on the project."

Paul Berge,

MLH 038 home owner









MLH 040

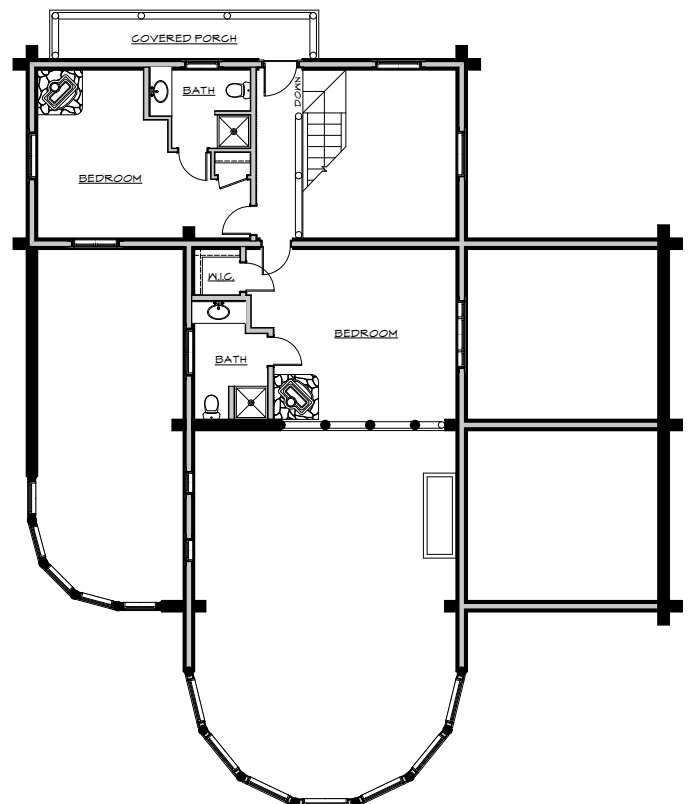
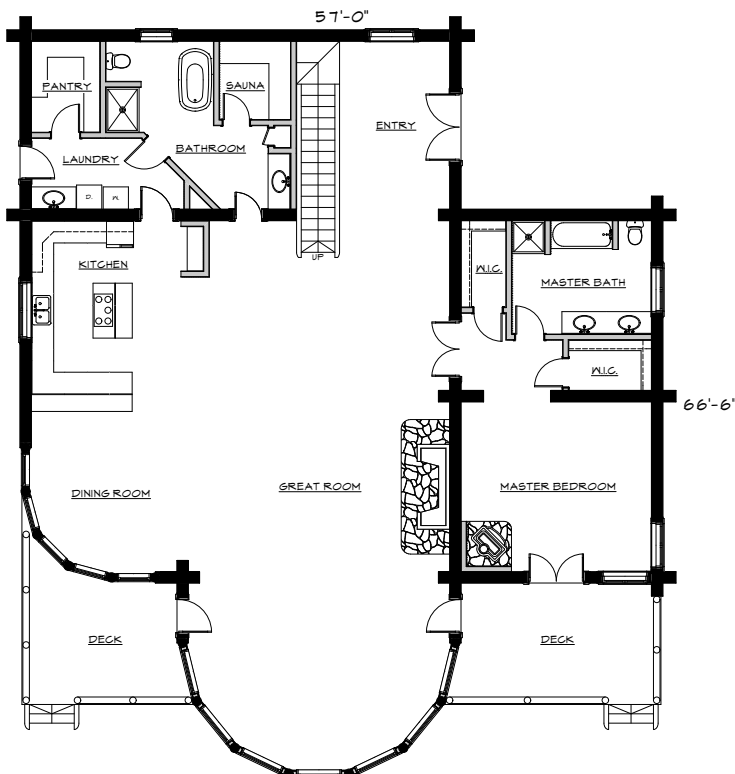
Main Level 2860, Loft Level 828,

Home owner designed and decorated, this exquisite 3,500+ square foot, three bedroom, four bath, custom log home is a classic dream come true. An optional lower level floor plan provides additional space for that game room, fourth bedroom with bath, wine storage and the unique boathouse featured in this home.

“We were completely thrilled by our experience with Montana Log Homes. A more professional, talented, experienced and honest group of individuals does not exist. Would we use Montana Log Homes again? Unequivocally yes!”

Bill & Jackie Channell,

MLH 040 home owners



MLH 041

Main Level 2452, Loft Level 270

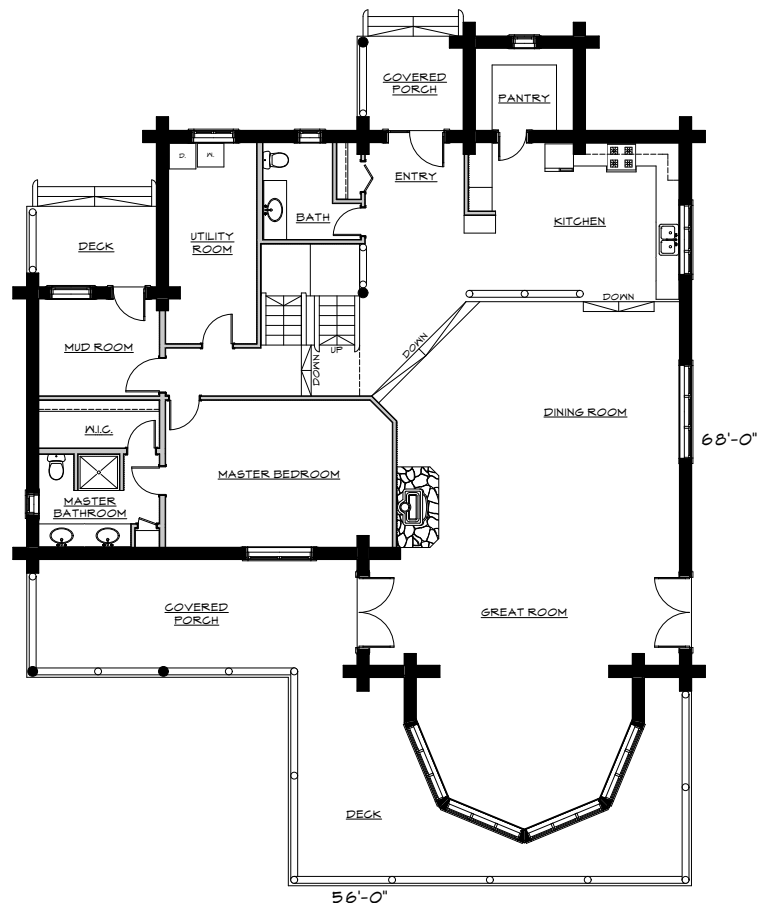
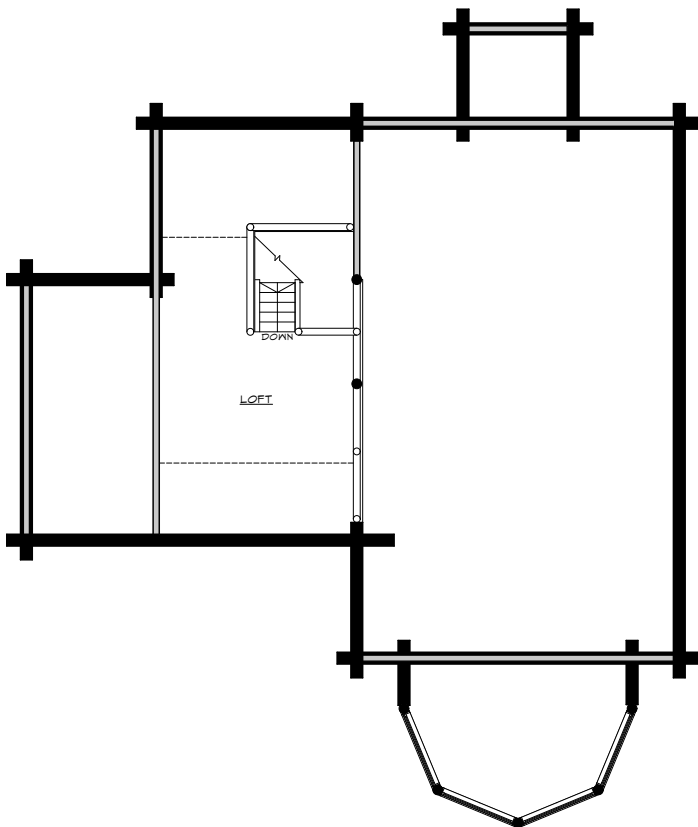
This custom plan has many distinguishing features such as, full log gable ends, log king post trusses, log staircase and railing. A sunken living room is further accentuated by a half octagon sitting area.



“What a pleasant stress free experience in building a new home. Working with professional, knowledgeable and friendly people makes all the difference in the world.”

Scott & Barb Casebolt,

MLH 041 home owners









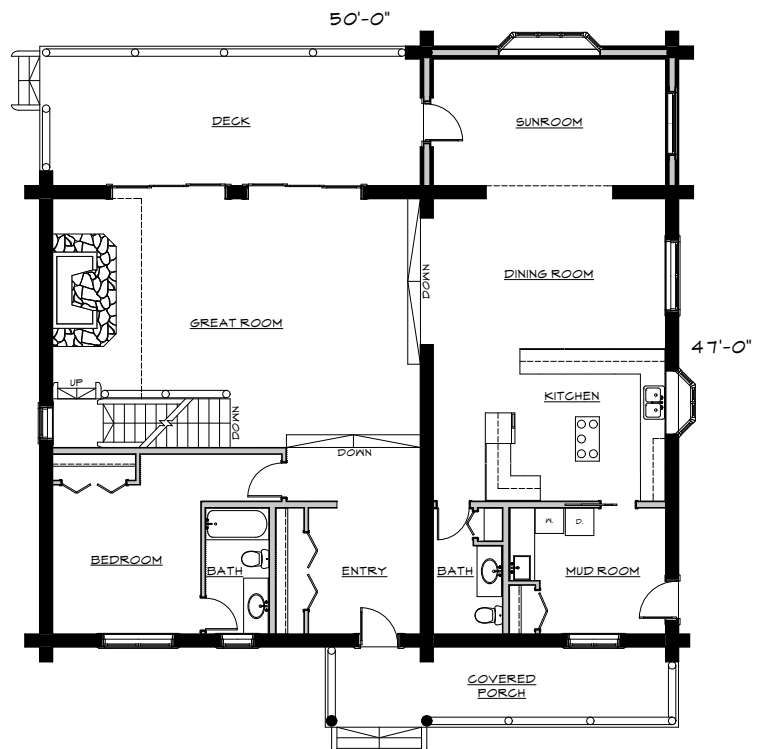
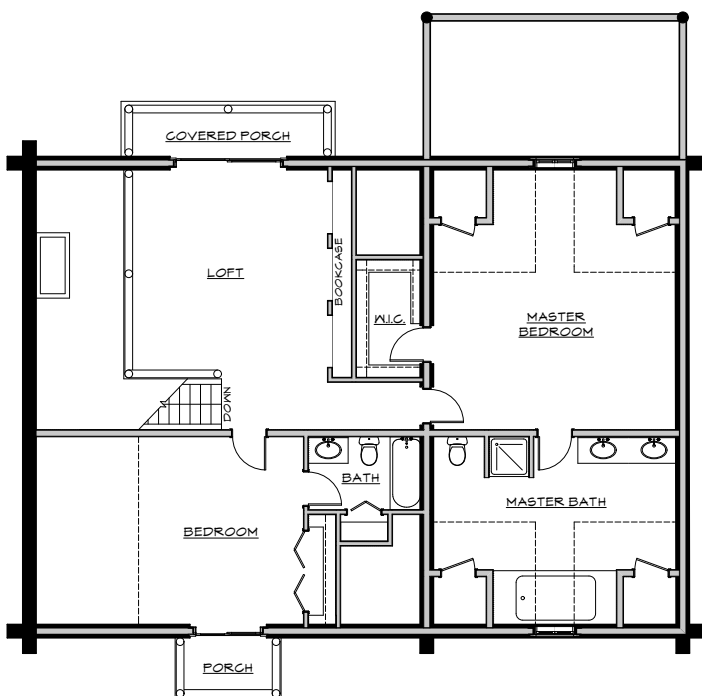
MLH 042

Main Level 2020, Loft Level 1106

"To be brief, we're in, we love it and we owe you, Rich and the MLH crew a great deal of thanks!"

Bill & Heidi Rothe,

MLH 042 home owners







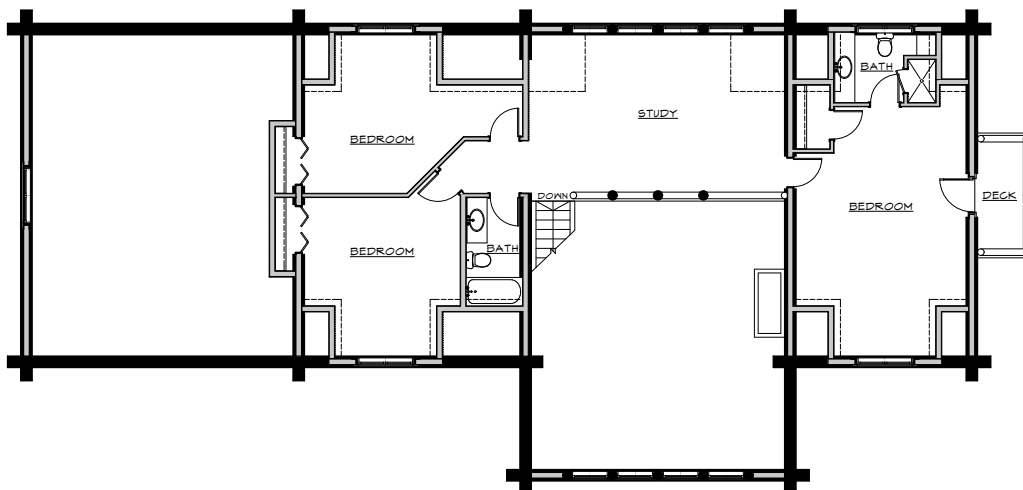
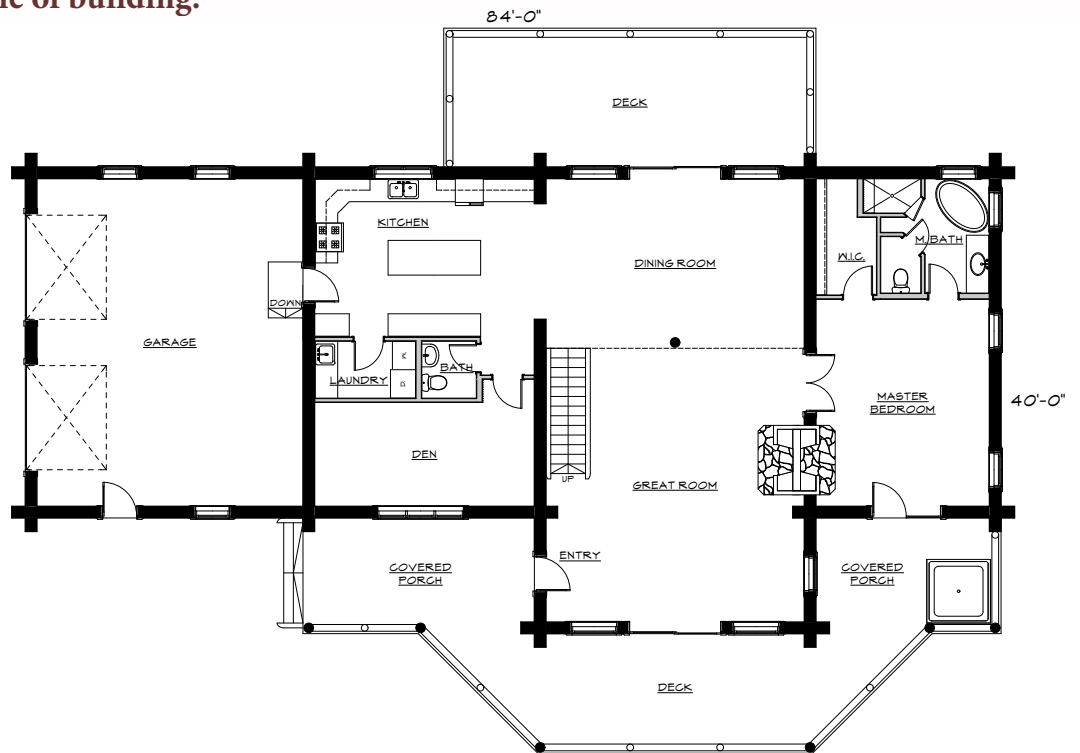
MLH 043

Main Level 2040, Loft Level 1192, Garage 720

Featuring four bedrooms, a den and three-and-a-half baths, the MLH 043 offers a total of 3,232 square feet of living space. The attached garage keeps vehicles close at hand and leads directly to the kitchen for ease in bringing in the groceries.

A spacious main floor layout and ample deck space make entertaining large groups of people enjoyable no matter what the weather brings. The master bedroom suite features an intimate and cozy fireplace for that very special ambiance.

This home was built in the chink style of construction. Please see page 66 for further information on this style of building.





MLH 045

Main Level 1948

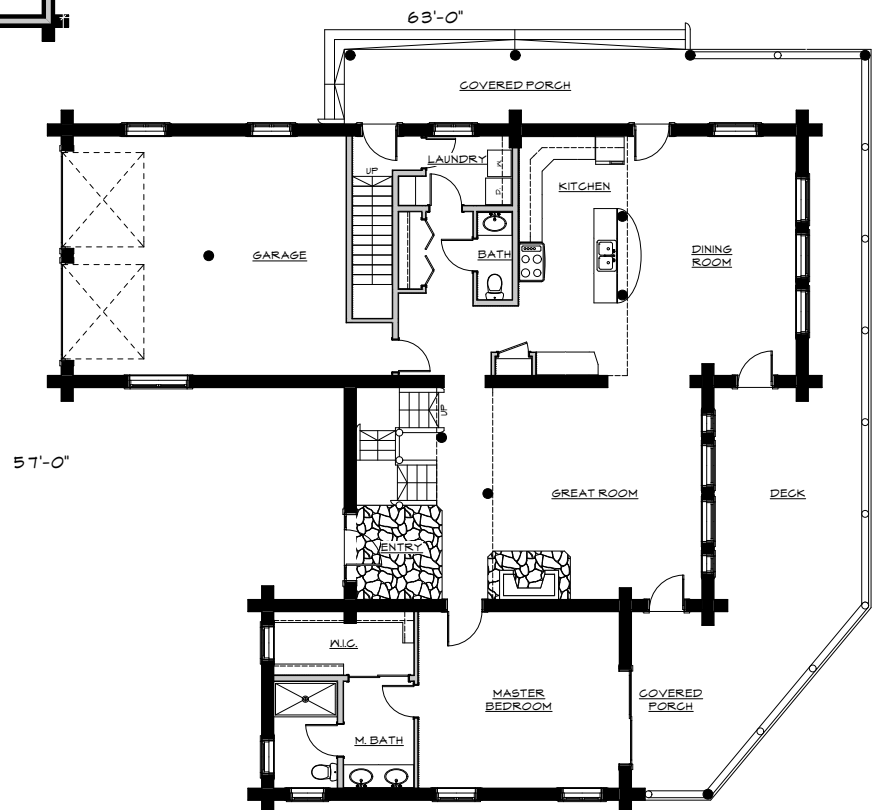
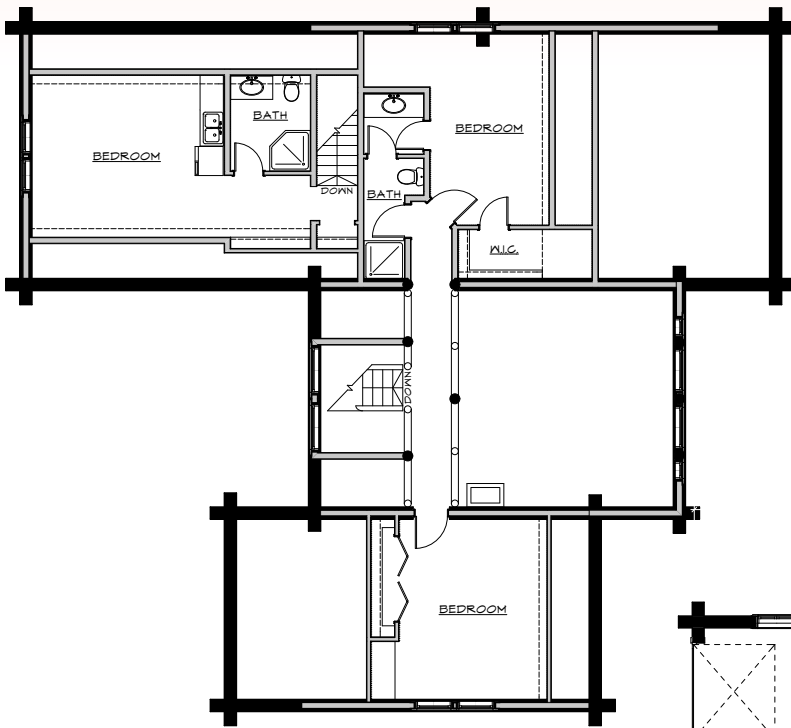
Loft Level 955

Garage 528

**“Great look, great service, superb builder.
Couldn’t be happier and look forward to
many enjoyable vacations in our new home.
Thanks for all the effort and competence.”**

Joe & Cynthia Riggs,

MLH 045 home owners





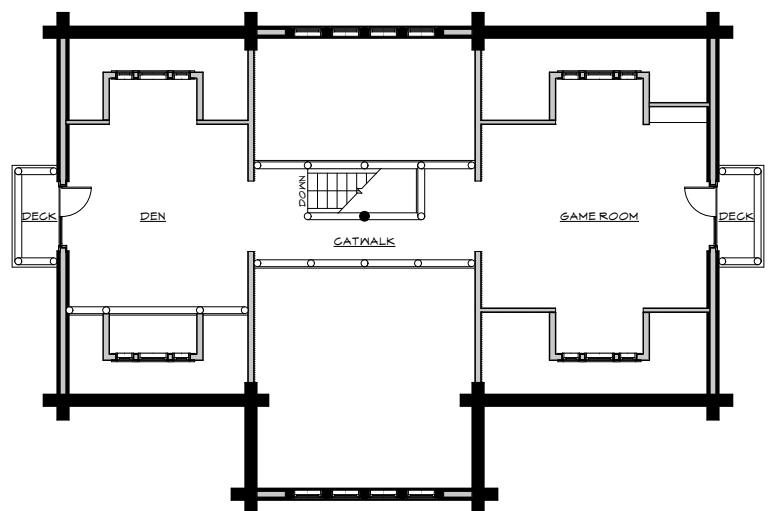
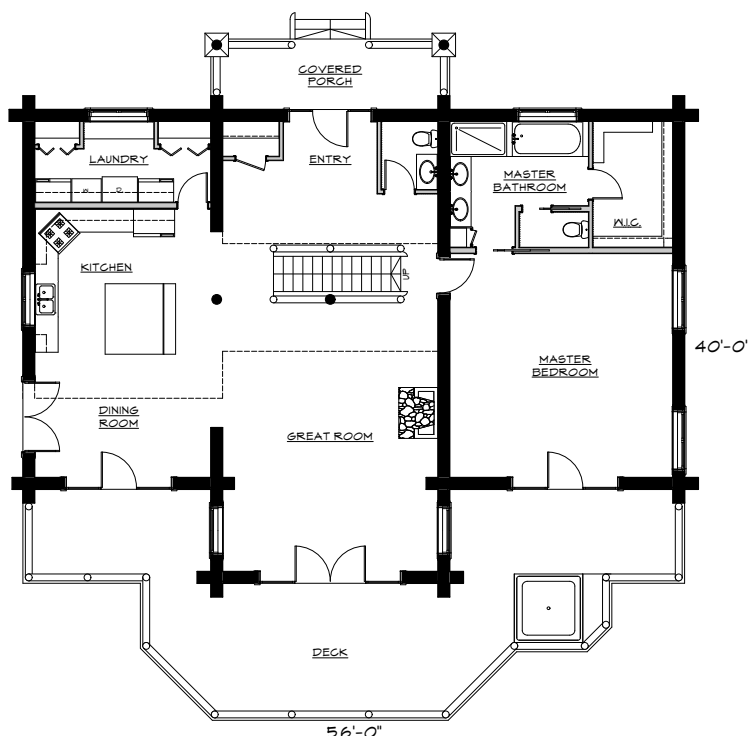
MLH 053

Main Level 1952, Upper Level 862

The upper level of this home can easily be converted to one or two bedrooms with a bathroom.

“Nancy and I were seeking to build a log home with a natural log profile, at a reasonable cost, with excellent construction quality, and minimal surprises or headaches. We also needed a draftsman to do the technical drawings from our design. Montana Log Homes was the perfect partner for us with their absolute trustworthiness, construction style and quality, and price. Ironically, they are located near our build site, but we would have selected MLH regardless. They and the build team have built us a home, not a house. The difference is the care and trust that goes into it.”

Scott & Nancy Murphy, Custom designed
MLH home owners





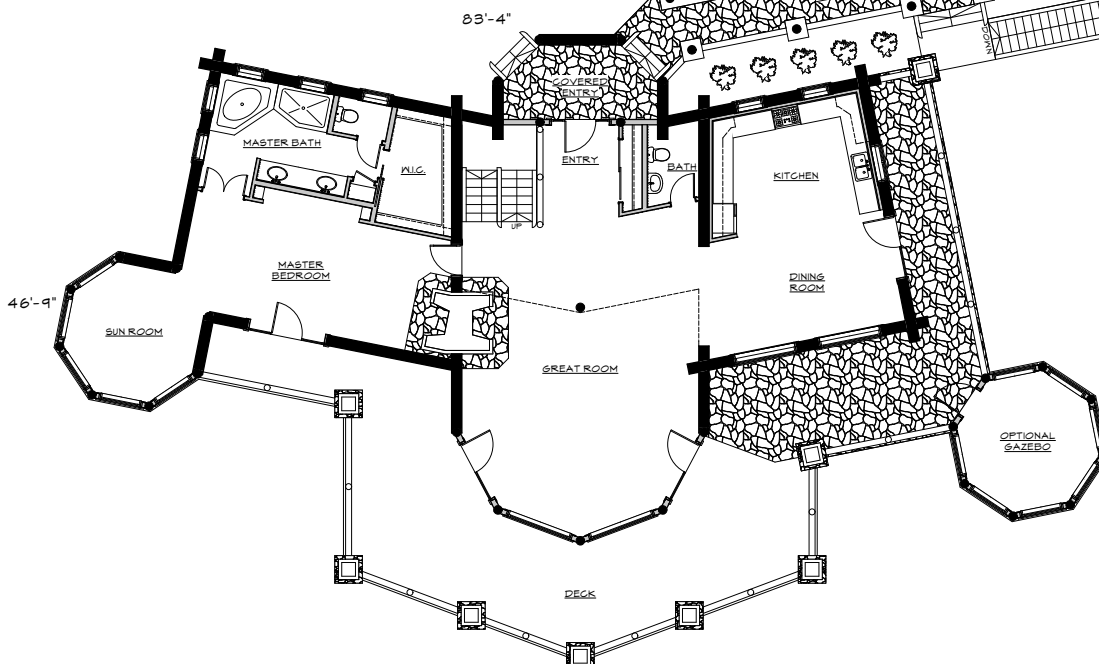
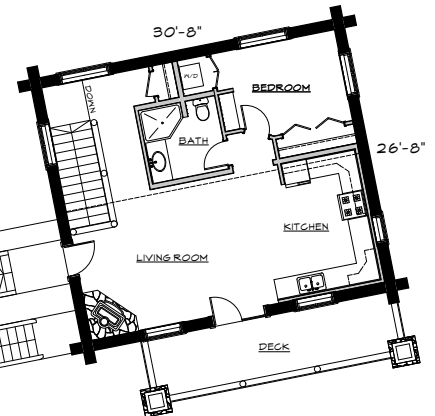
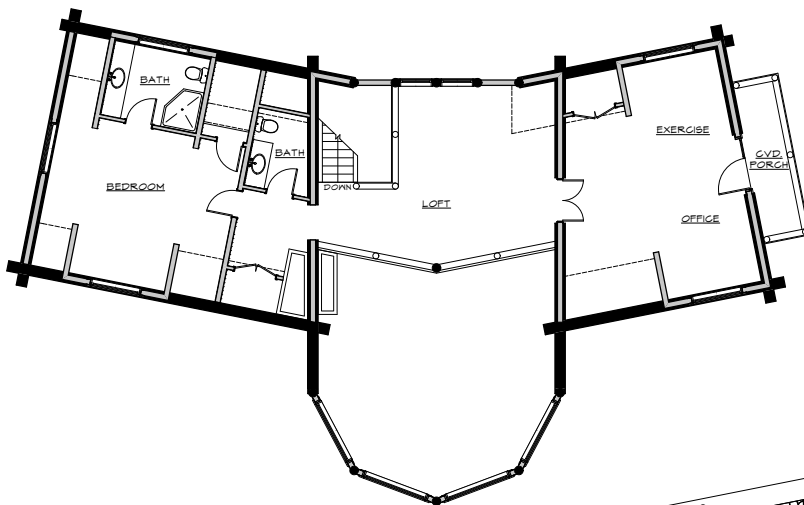
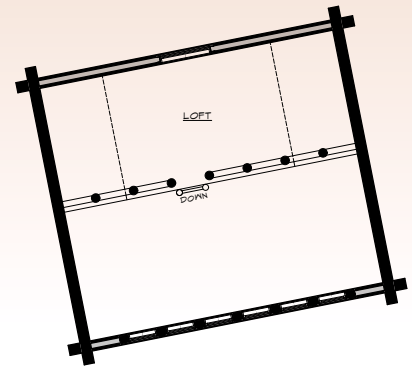




MLH 054

*Main Level 2188, Loft Level 1204,
Guest 818, Guest Loft 218*

See pages 31 & 32 for additional photos
of this home.





“Thank you for spending several hours of phone calls and emails talking to me and helping with the design. We’ve been very pleased with the entire journey of building our dream home from beginning to end.

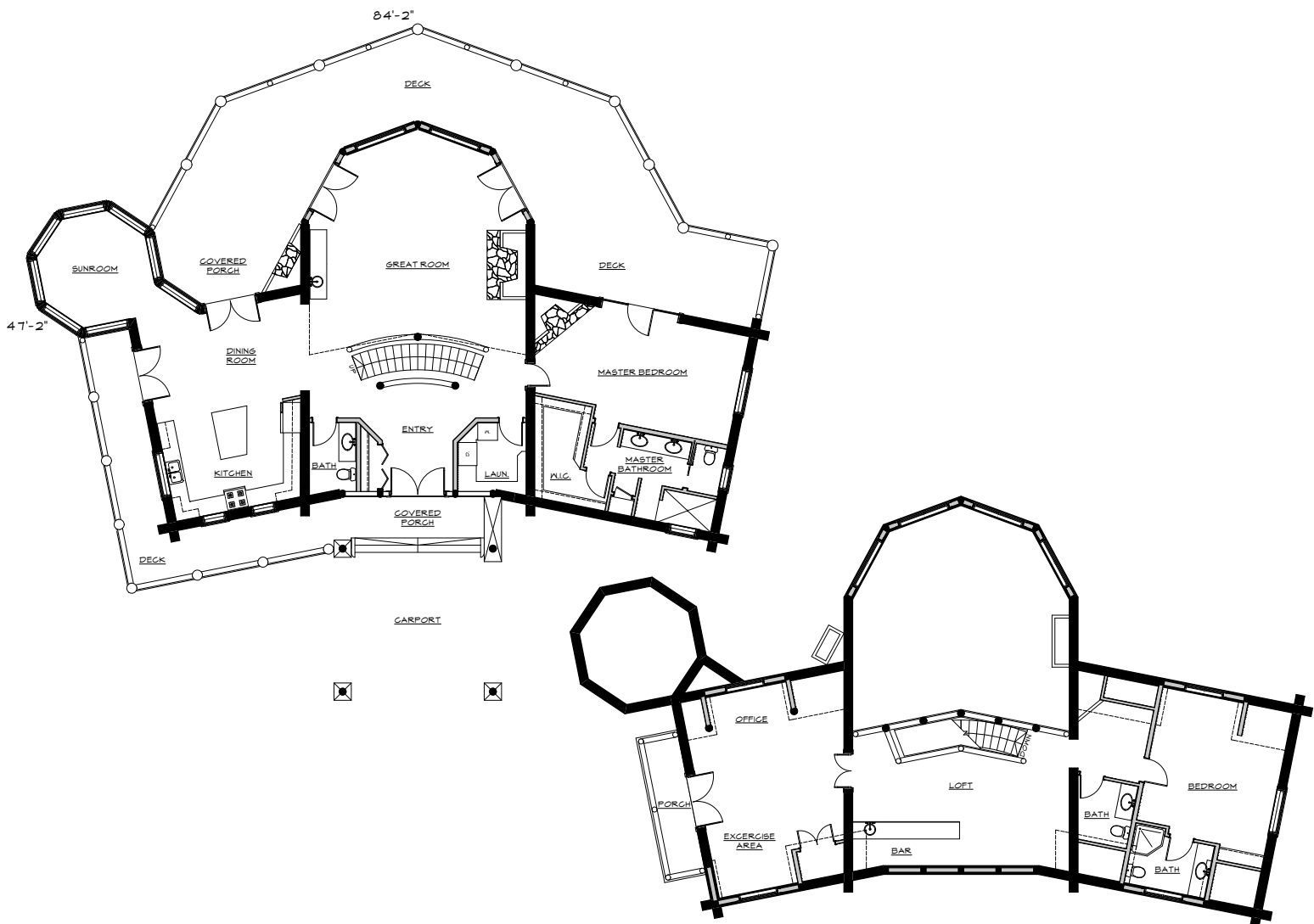
Those Montana Boys know how to Get er done. Very efficient and hard workers. Everybody is impressed with Montana Log Homes.”

Tom & Jan Nasser,

MLH 054-A
home owners

MLH 054-A

Main Level 2285, Loft Level 1157







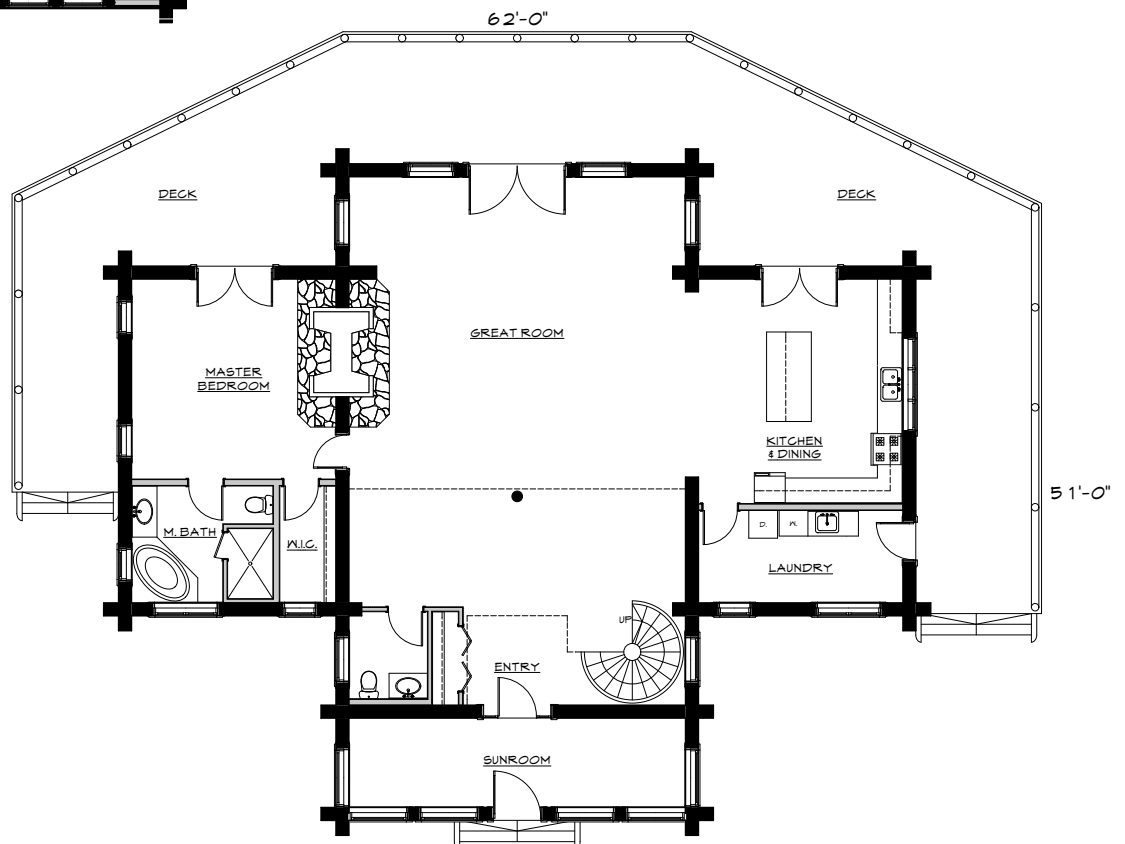
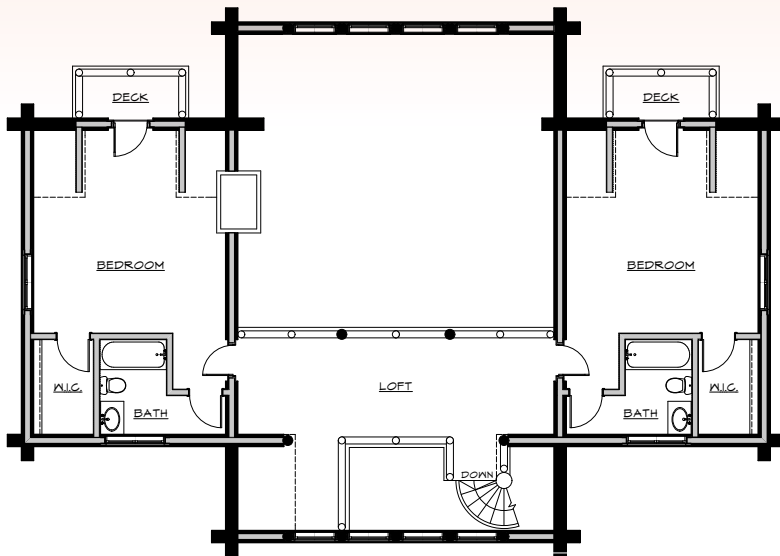
MLH 055

Main Level 2346, Loft Level 1109

"Professionalism Personified".

James & Michelle McCartney,

MLH 055 home owners

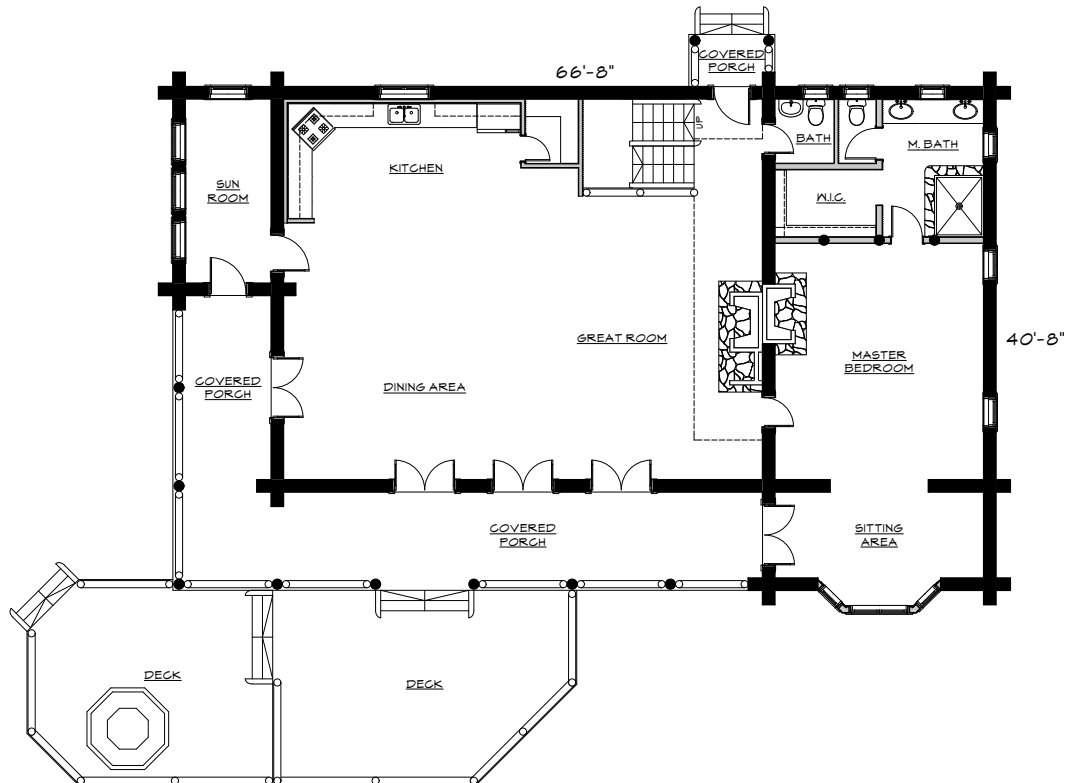
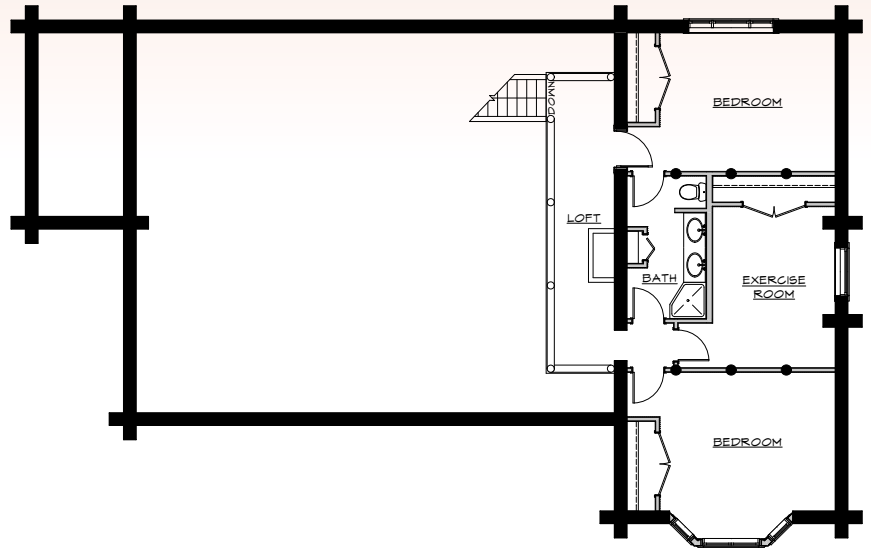




MLH 058

Main Level 2215, Loft Level 916

Custom designed to create a grand atmosphere with soaring cathedral ceilings, accented by massive timber frame trusses and an impressive stone fireplace. Escape to the spacious master suite and enjoy the view in a private sitting area, or cozy up to a crackling fire with a good book. This plan has it all.





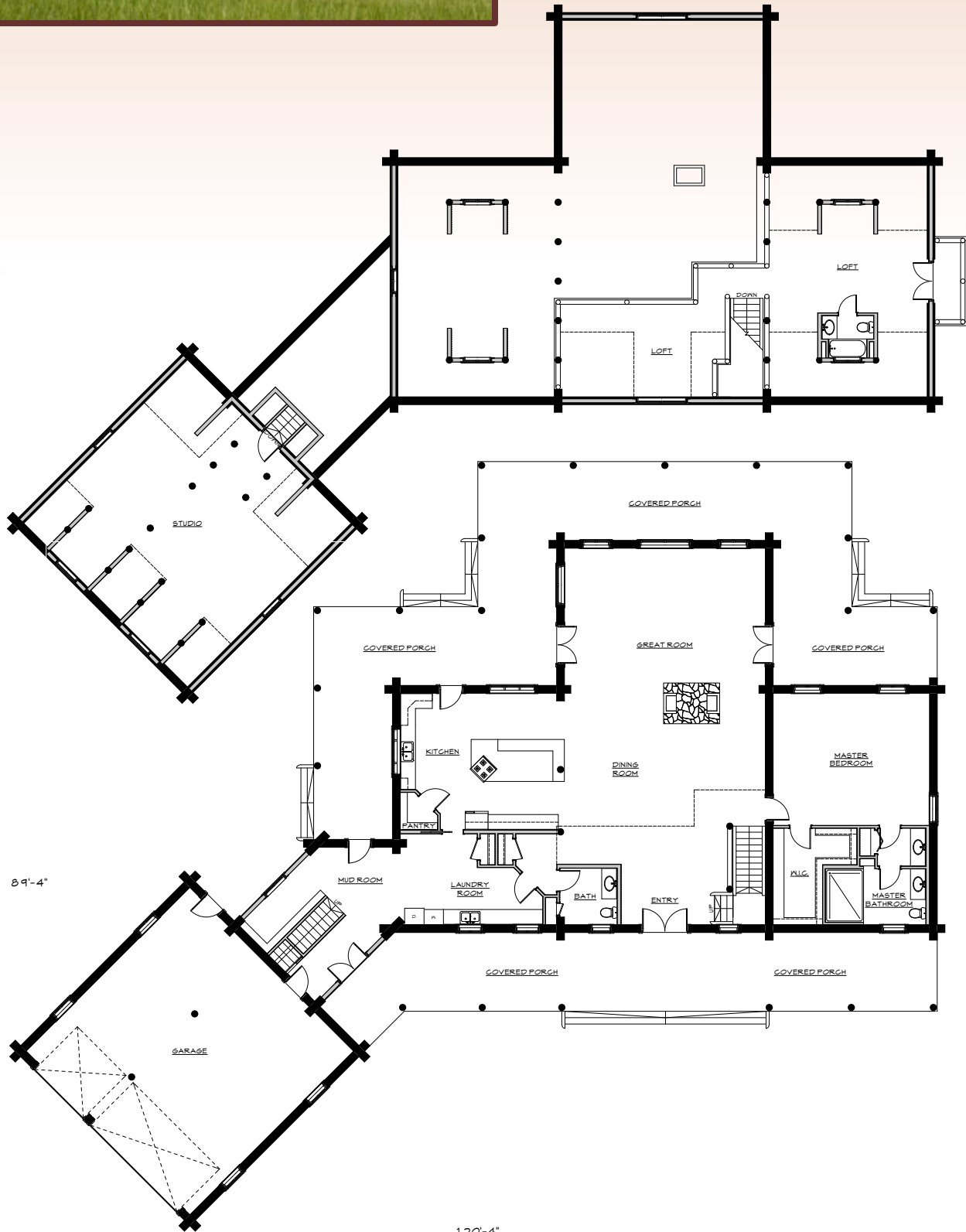




MLH 059

Main Level 3091, Loft Level 1236, Garage 1024

This beautiful custom designed home was built in the chink style of construction – notice the wide bands of chinking material between the log courses.





Chink Style Construction

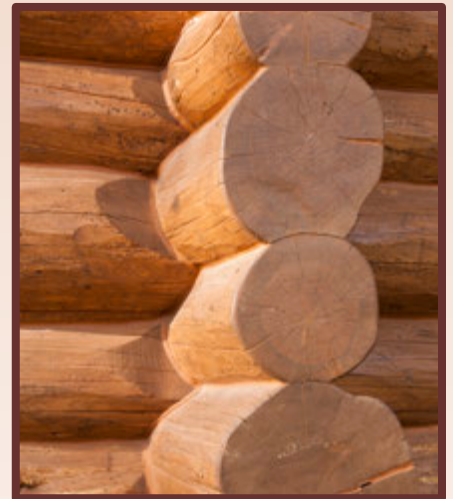
Full length round logs, saddle notched at the corners. Gaps between logs are filled with a closed cell backer rod and then “chinked” with an acrylic chinking compound.



Scandinavian Full-Scribe Construction, Swedish Cope ends and Saddle Notched Corners



Each full length log is scribed to the log below and a V is cut along the scribe lines allowing the top log to wrap over the bottom log. The v-notch is filled with insulation and the result is a very tight fitting log wall that is caulked with an acrylic rubber sealant.



Dovetail

Full length logs are custom milled on two sides and the corners are dovetail notched to form the corner. This type of construction also requires backer rod and chinking compound to weather proof the home.



Montana Log Homes



Thank You for your interest in Montana Log Homes. We hope that you have found this plan book to be informative, thought provoking and exciting. We take this opportunity to extend an invitation to visit our office/show home and our construction yard, located in Kalispell, Montana, or visit our website. You will see first hand the construction process of a handcrafted log home, and learn why Montana Log Homes should be your choice of log builder for your log home project.



Montana Log Homes

3250 Highway 93 South • Kalispell, MT 59901 • 406-752-2992 • fax 406-257-7014
email: info@montanaloghomes.com • www.montanaloghomes.com

Comments from our customers

"There is no way Bob and I can express to you our appreciation for all your hard work and dedication you have put into our home. We feel you are as proud of it as we are. We are still in awe of the beauty and workmanship. Montana Log Homes is truly a great company. Thank You for all your help, your true dedication and your friendship."

Bob and Naomi Barkley, Albany, Georgia

"I just want to take a moment to tell you how impressed I am with Montana Log Homes. Actually, impressed is an understatement. While I've done a number of log cabins with different companies, none even come close to the outstanding product you and your company delivers. It's like comparing a Ferrari to a Volkswagen; there really is no comparison... and I can't say enough good things about Tory and Chauncey..They are hard-working (again a huge understatement), competent, professional, knowledgeable, a pleasure to work with, and true craftsmen..."

Dennis Coggetti, Cozzetti Construction, Tucson, AZ

"Our building inspector, who has worked for many years in construction, said it was the finest and most well-built log home he'd ever seen!"

Karen and Fred Kowal, Wasnerville, New York

"... I want to let you know how impressed I am with Montana Log Homes — and not just the excellent product, but the personnel ... I was pretty surprised, not only with the craftsmanship but more importantly, the pride your crew displayed. Their conscientiousness was visible in the log work and their attitudes, and that combination is impressive ... I feel very lucky having selected Montana Log Homes and volunteer to be added to your list of 'Another Happy Customer'..."

Mark Albershardt, Whitefish, Montana

"... if you are considering a log home or other log structure, we highly recommend Montana Log Homes. The people there are true professionals who have the expertise to do their work well and who care enough about their work to take pride in doing it right. We know you will be as thrilled as we are with the results."

Mike and Judy Blair, Anchorage, Alaska

"I have been meaning for some time to drop a line to you guys and tell you just what a great job that you did for me at the Coe Residence. The quality of the logs and uncompromisingly high level of fit and finish executed by Brad and his guys really make this job shine. The framing crew has had an easy time over-framing your log work due in no small part to the accuracy of your assemblies. I feel extremely fortunate as a general contractor to have access here in the Valley to such craftsmanship as you provide. Please relay to your guys, if you would, how much I appreciate their efforts." *Lew Ford, Ford Construction, Kalispell, Montana*



Montana Log Homes

3250 Highway 93 South • Kalispell, MT 59901

406-752-2992 • fax 406-257-7014

email: info@montanaloghomes.com

www.montanaloghomes.com